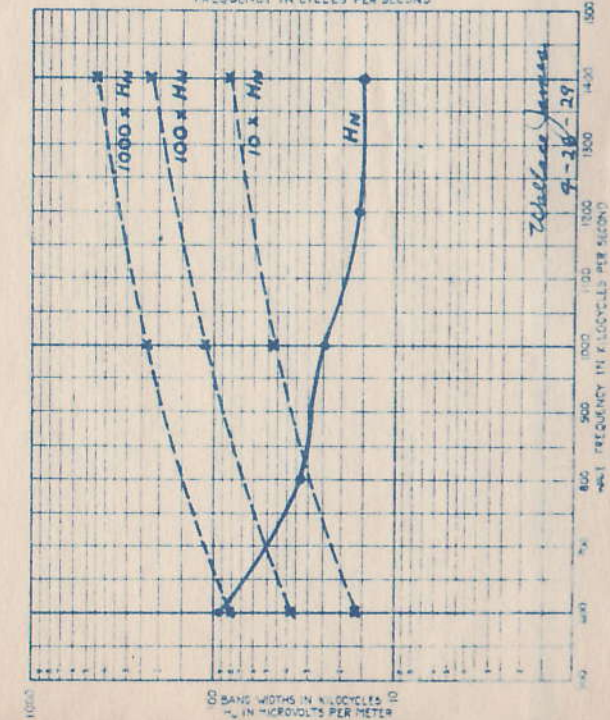
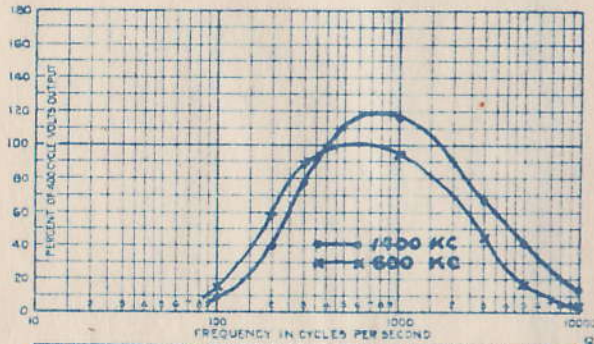


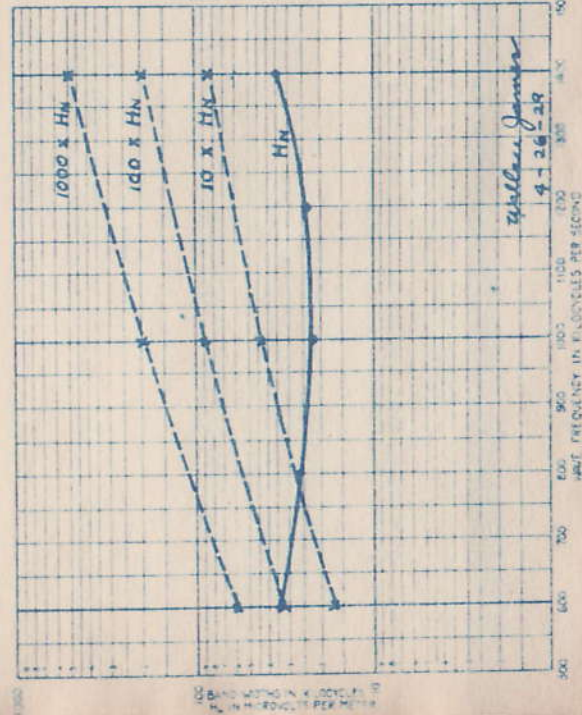
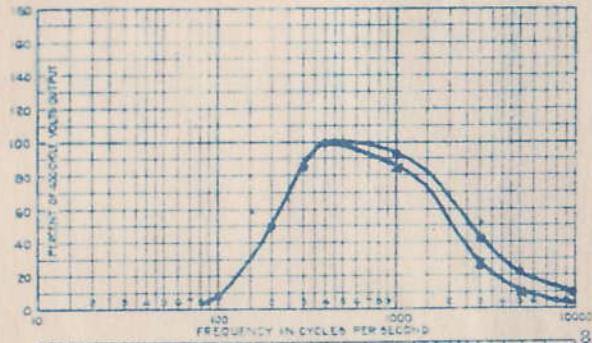
ATWATER KENT  
MODEL 40

MARCH 1929



ATWATER KENT  
MODEL 38

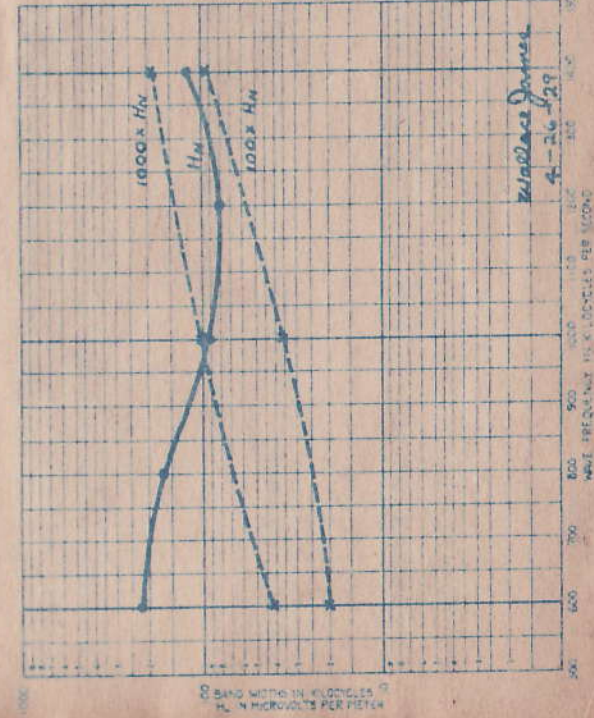
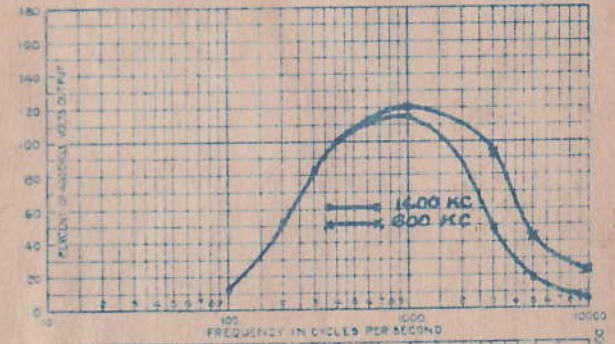
JUNE 1928



ATWATER-KENT  
MODEL 37

JUNE 1928

104



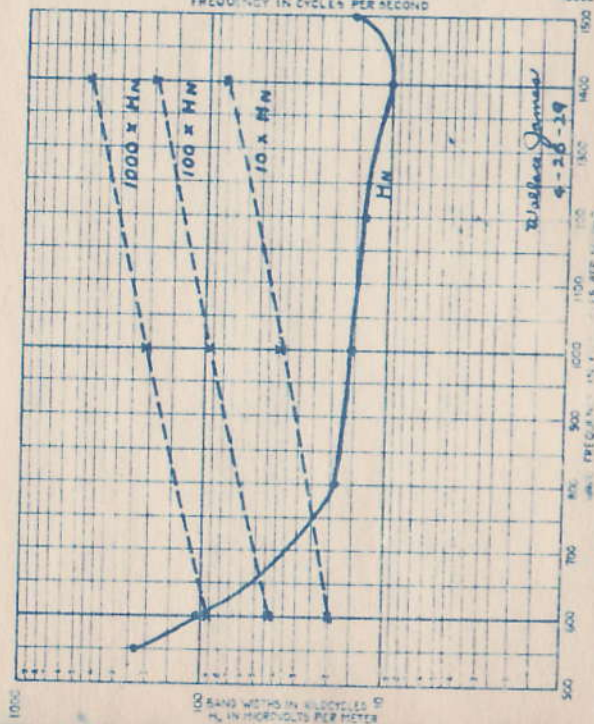
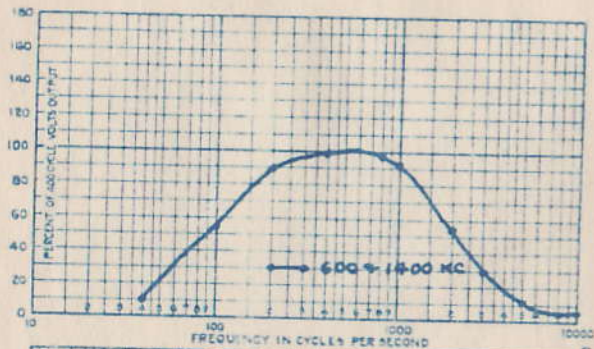
ATWATER KENT  
MODEL 53

MARCH 1929

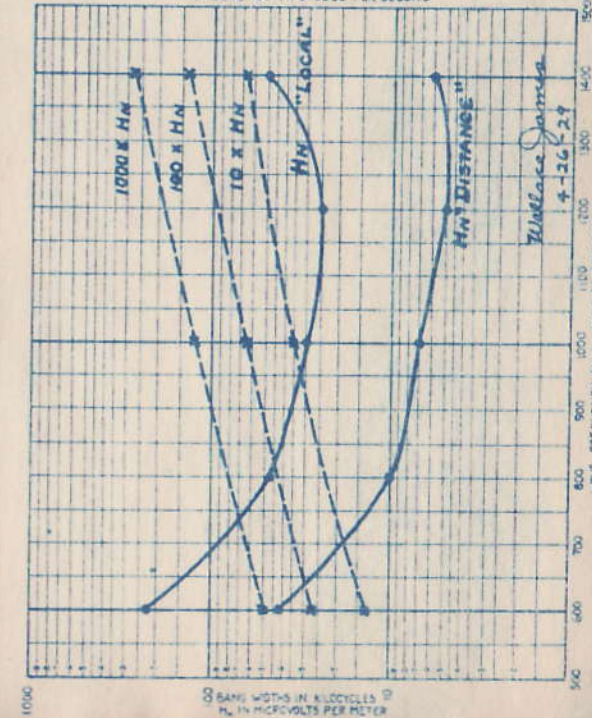
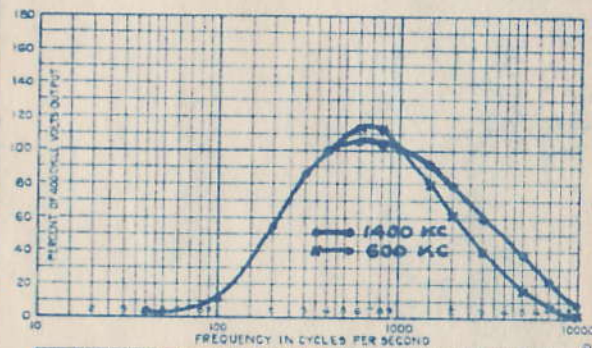
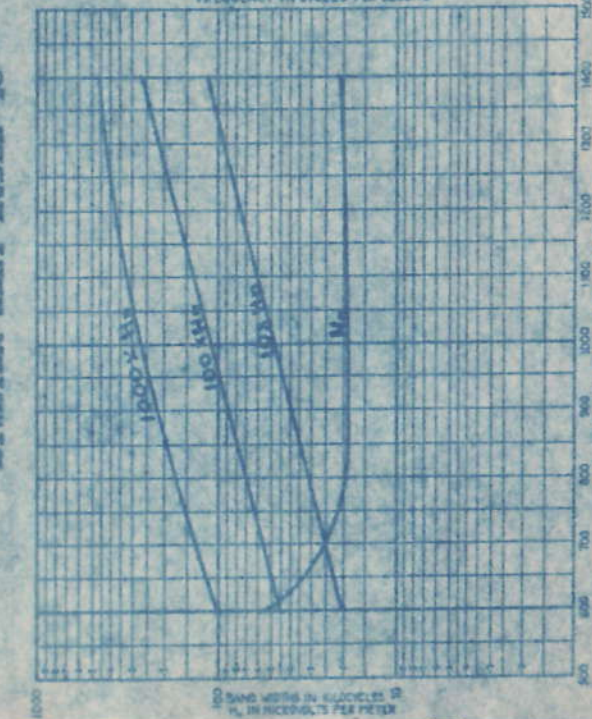
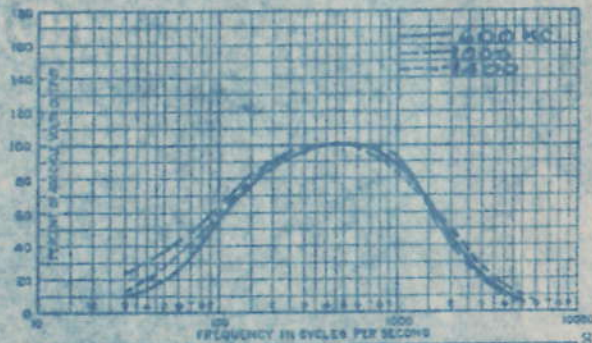
Price \$83.00; Table Mod-  
el; 3 Tuned Cir. 3-226R. **ATWATER-KENT**  
-227 Det., 1-326 A.F., **MODEL 46**  
2-171A P.P.A.F., V.O. Ratio=5000:1; **E. Pgh.**  
For use with Dynamic Reproducer;  
Lacquered Metal Cabinet. **351**

ATWATER KENT  
MODEL 44

MARCH 1929



ATWATER KENT MODEL 46



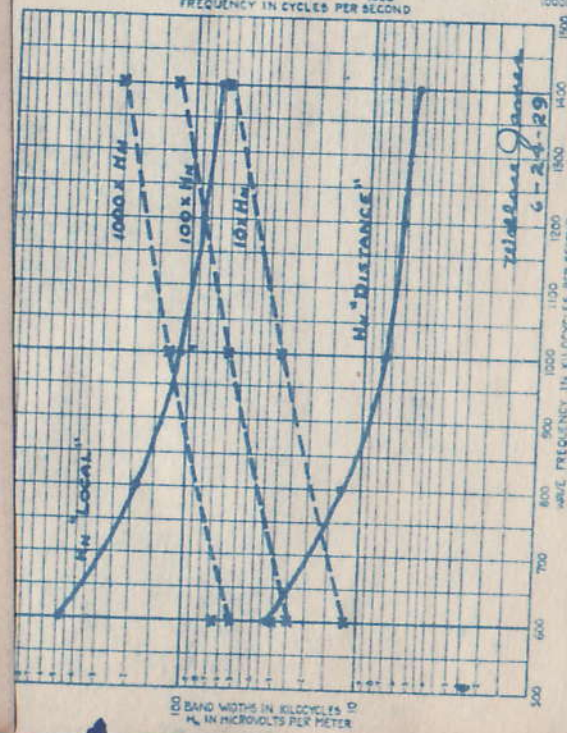
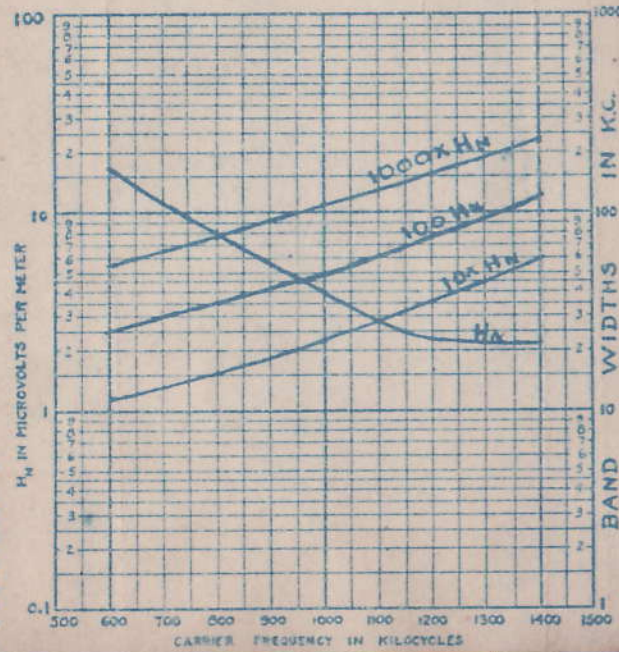
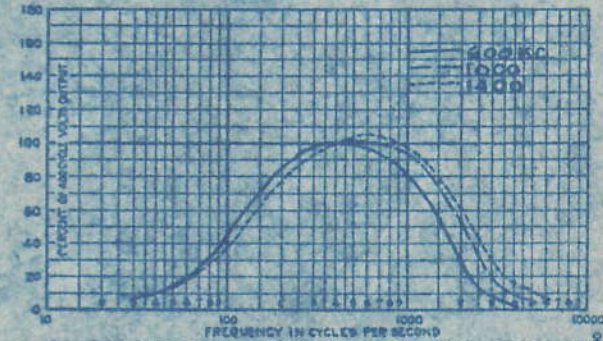
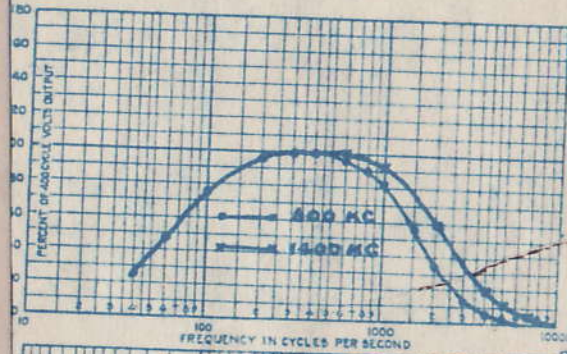
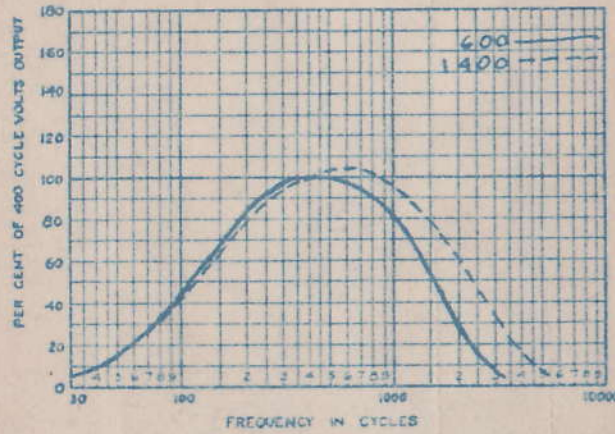
PRICE \$80<sup>00</sup>; Table MODEL;  
 TUBES 2-224, RF, 227B<sub>1</sub> DET;  
 227, 2-245 AUDIO, 280 Rect;  
 VOL. CONT S.G. Bias; 2300:1;  
 TUNED CIR 3; Res. coupling between Det & 1st  
 A.F.

ATWATER-KENT  
 MODEL 55  
 5-15-29  
 E. Pgh.

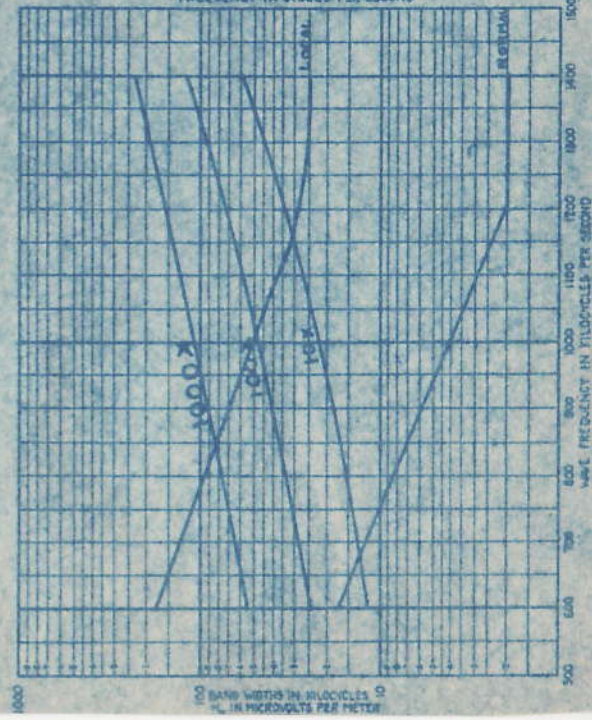
ATWATER-KENT  
 MODEL 55  
 AVERAGE OF 3 SETS  
 MAY 1929

Price \$88 set only;  
 3T, Cir. S.G.-R.F.;  
 224, 2-227, 2-245 PP  
 -280; V.C. Ratio-2314:1; Table  
 Model; For use with Dynamic Speaker;  
 Lacquered Metal Cabinet;

Atwater Kent  
 Model 55  
 Tested May 12  
 at E. Pgh.



ATWATER KENT MODEL 55



K 7604964



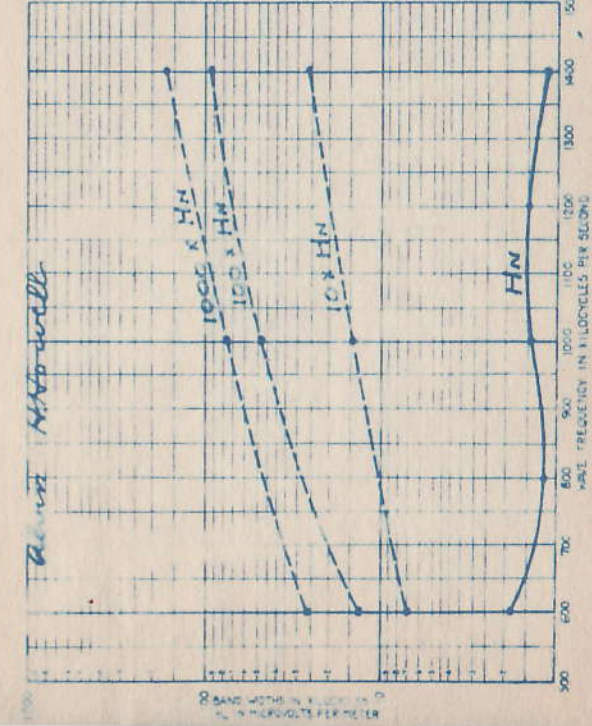
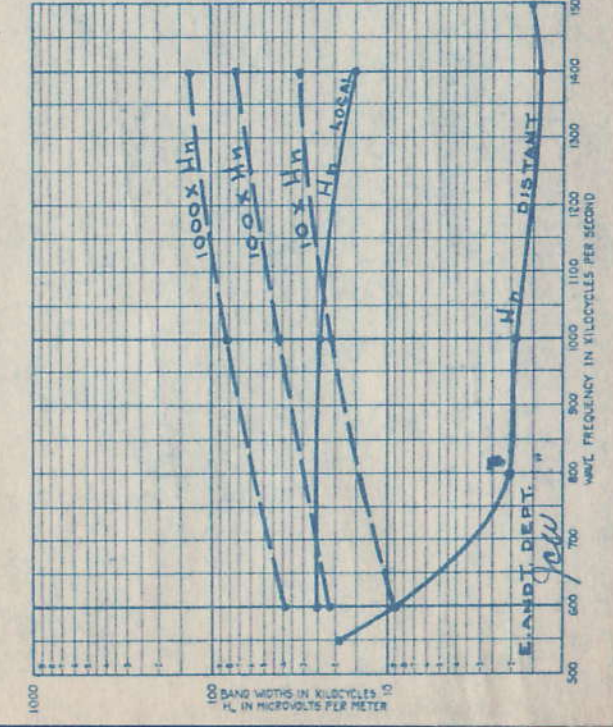
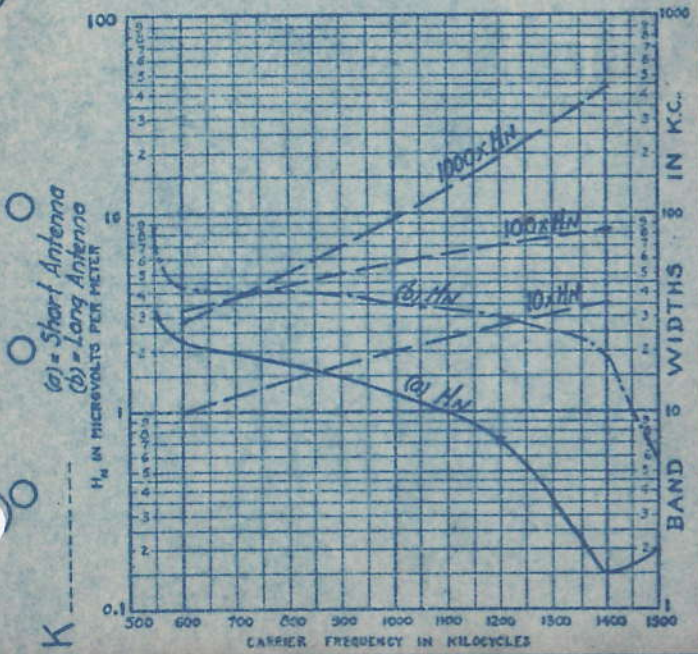
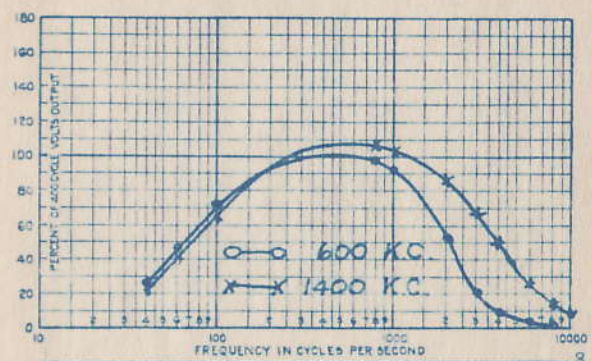
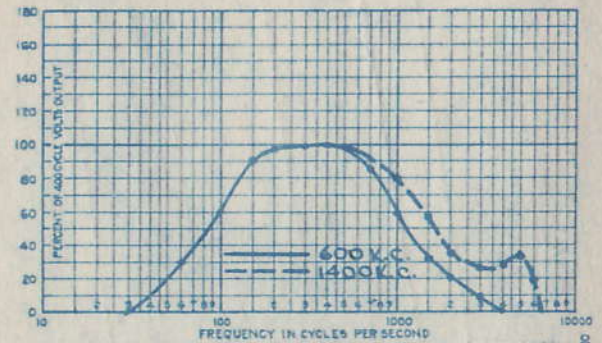
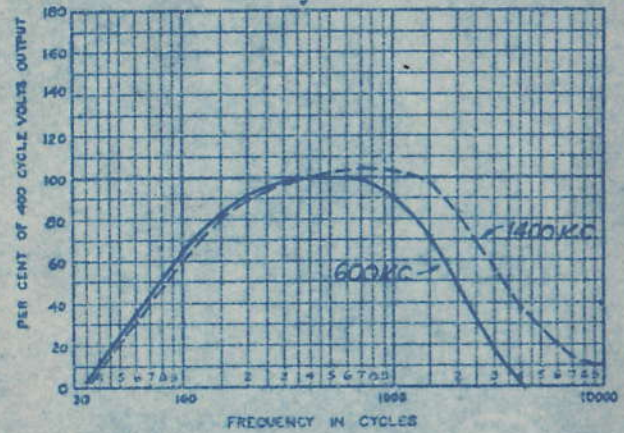
PRICE \$135<sup>00</sup>; Chassis Model;  
 TUBES 3-224 RE, 227 DET;  
 1227; 2-250 P.P. AUDIO, 2-281 Rect.;  
 VOL. CONT. Ratio Over 10000:1;  
 TUNED CIR. 4 Tuned Circuits.

ATWATER-KENT  
 \*66  
 Oct. 18, 1929  
 Camden, N.J.

ATWATER-KENT  
 MODEL-61 (D.C.)  
 AUGUST 1929

PRICE \$134 (LESS TUBES)  
 (3) 224 (2) 227  
 (2) 245 P.P. (1) 280  
 HUM ACROSS 5000-Ω 0.11 VOLTS  
 BIAS TYPE DETECTOR  
 V.C. RATIO 45,000:1 8" CONE.

This receiver is manufactured in chassis model only



Price \$132.50-BOSCH,  
 \$150.00-EVEREADY; 4T. Cir Tested Nov.,  
 med Ant. (variometer) 1929; E. Pgh.  
 3-226T.R.F., 1-227 Det., 326 A.F.,  
 2-171A P.P.A.F.; V.C. Ratio=2850:1  
 BOSCH-Walnut Cabinet, EVEREADY-  
 Die-Cast Aluminum.

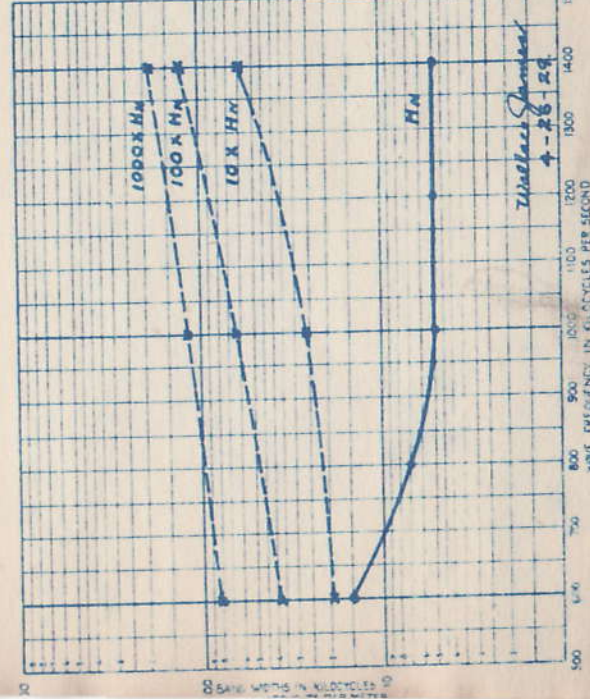
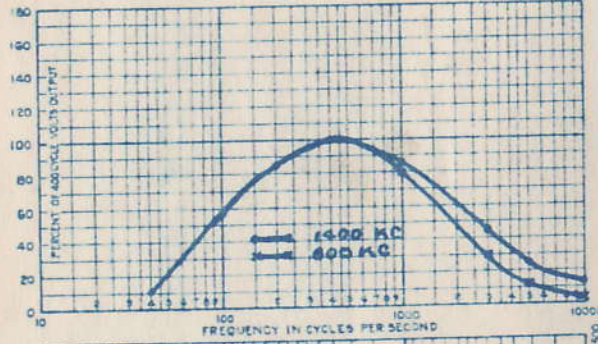
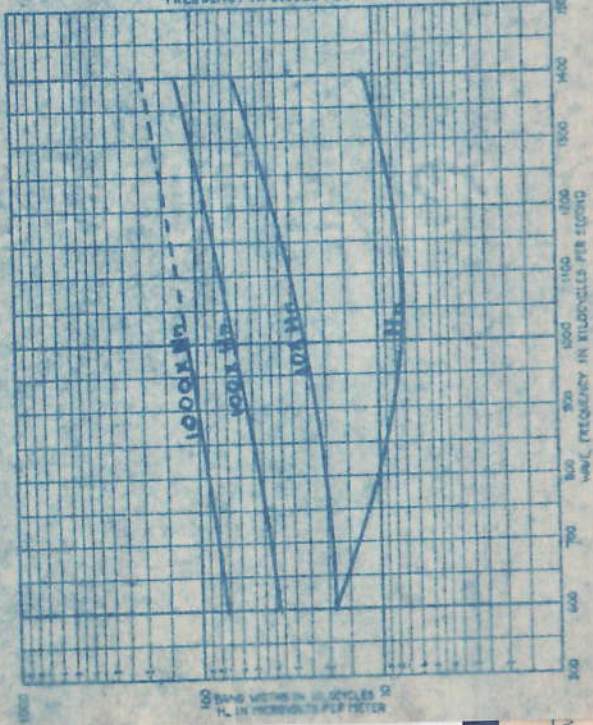
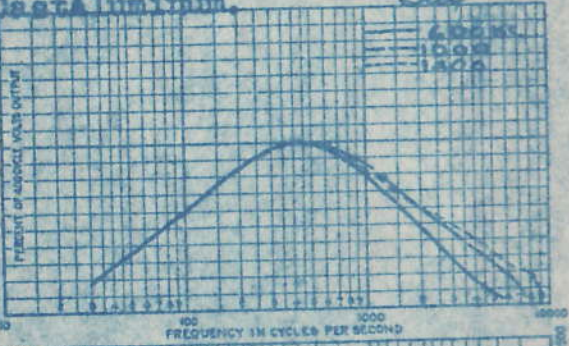
BOSCH-  
 EVEREADY  
 Tasted Nov.,  
 1929; E. Pgh.

BOSCH - 28  
 SAME AS EVEREADY  
 DECEMBER 1928

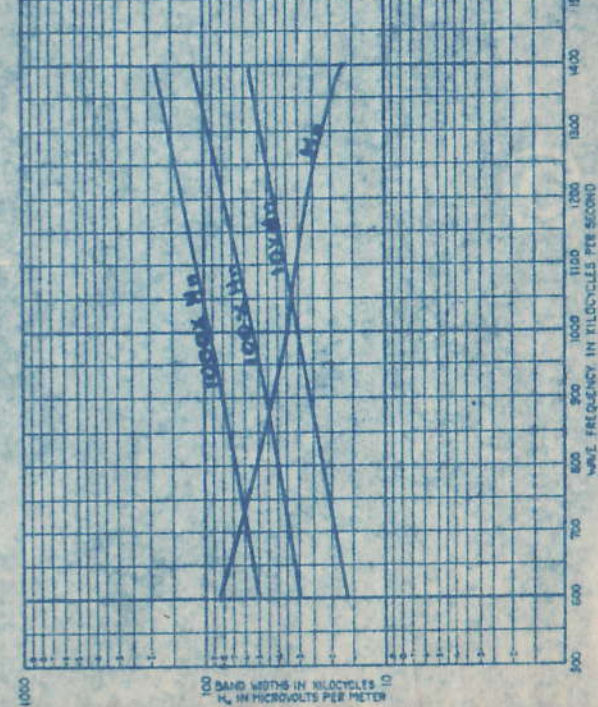
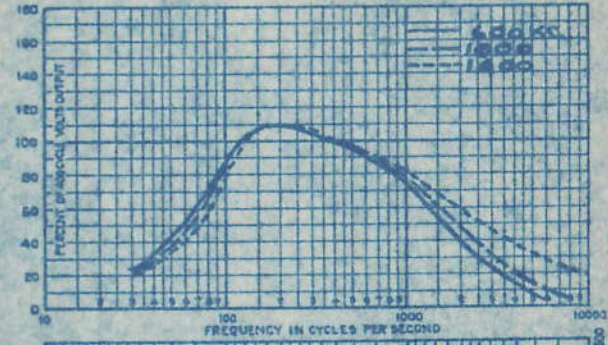
price \$475; Console;  
 Tuned Cir.; R.F. Fil.  
 Supply from UX 210 Osc.;  
 201A R.F., 201A Det., 201A A.F.;  
 250A.F., 2-381 Ret. V.C. Ratio=6700:1

BALKITE  
 SYMPHION  
 Model 7B  
 E. Pgh.

BOSCH 28 and EVEREADY (Same Chassis)

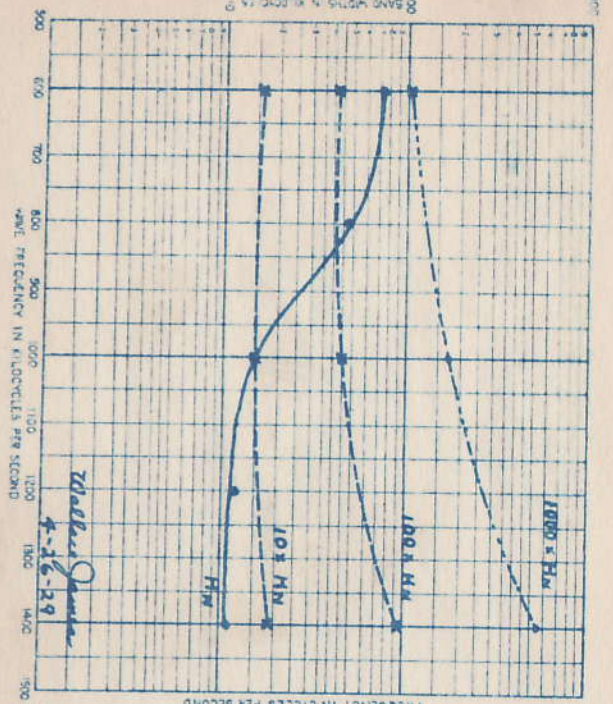
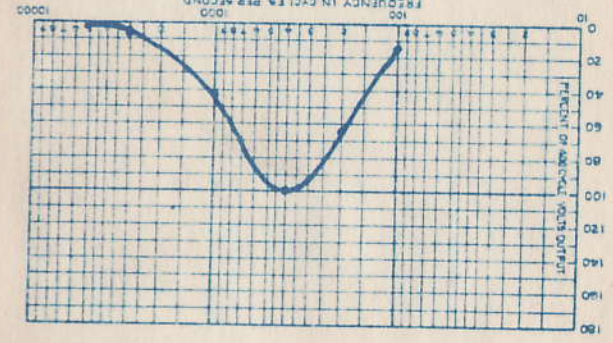


BALKITE SYMPHION MODEL 7B

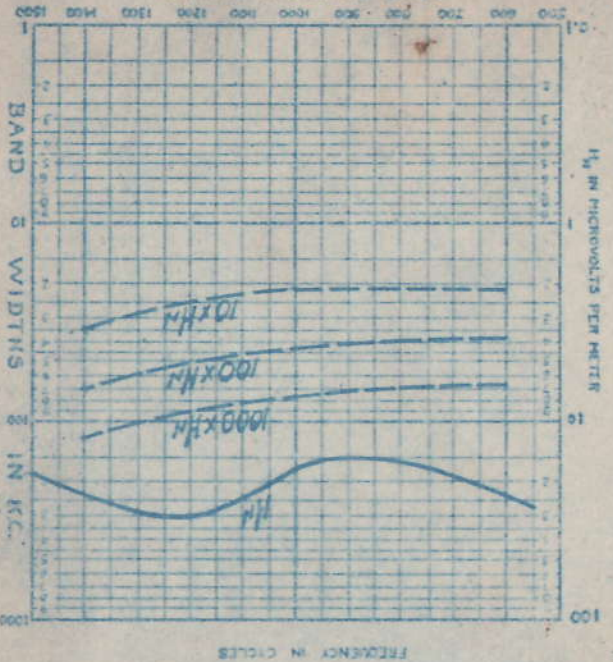
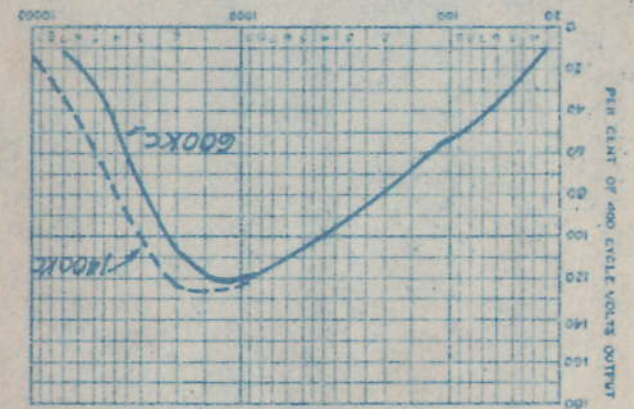


**CROSLEY BANDBOX  
MODEL AC-602**

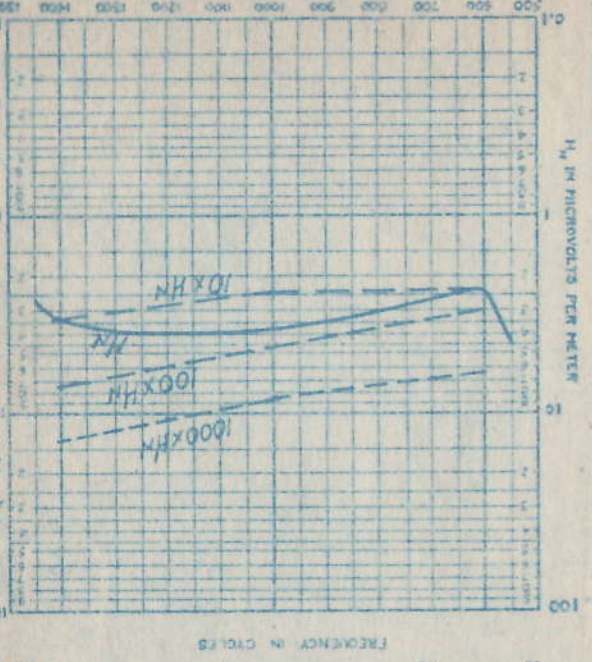
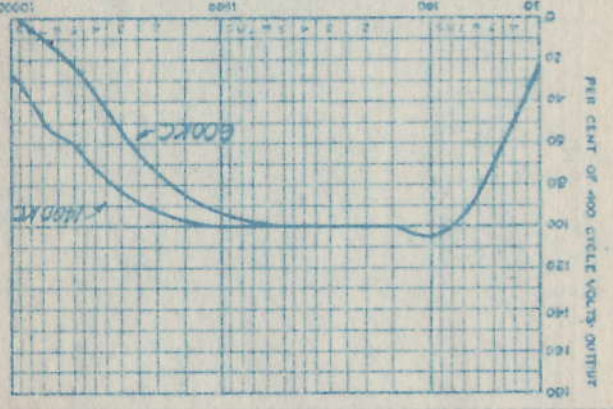
1928



PRICE \$ 175.<sup>00</sup> : Crosley Model : COLONIAL  
# 32 D.C. : Tubes 3-224 RF 224 DET :  
\$ 227.2-245 P.P. Audio. : 14 Nov. 1929  
Camped N.J. : Vol. Cont. Ratio over 15000:1 :  
Tuned Cir A. This receiver had to have the R.F. circuits  
lined-up as they were out of line when received



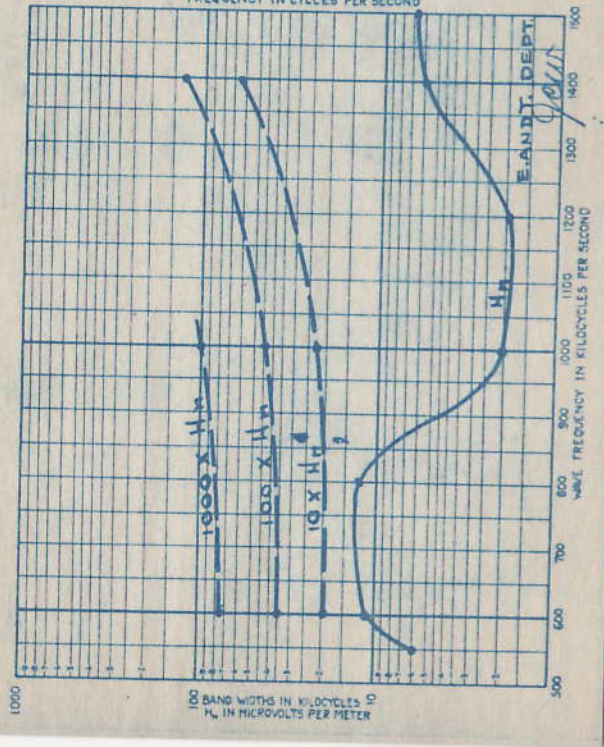
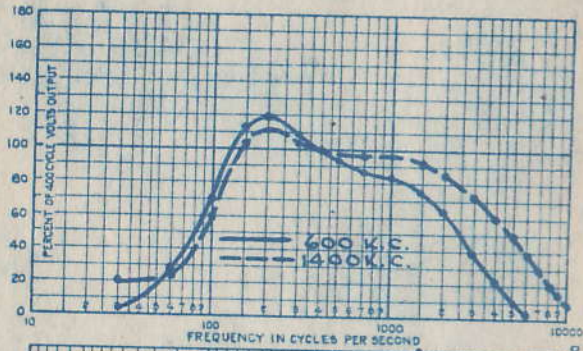
PRICE \$ 175.<sup>00</sup> : Crosley Model : COLONIAL  
# 32 D.C. : Tubes 3-224 RF 224 DET :  
\$ 227.2-245 P.P. Audio. 280 Det. :  
OR CONT 60,000:1 :  
Tuned Cir A Tuned Grip Circuits



COLONIAL  
32 AC  
OCT 11 1929  
Cam



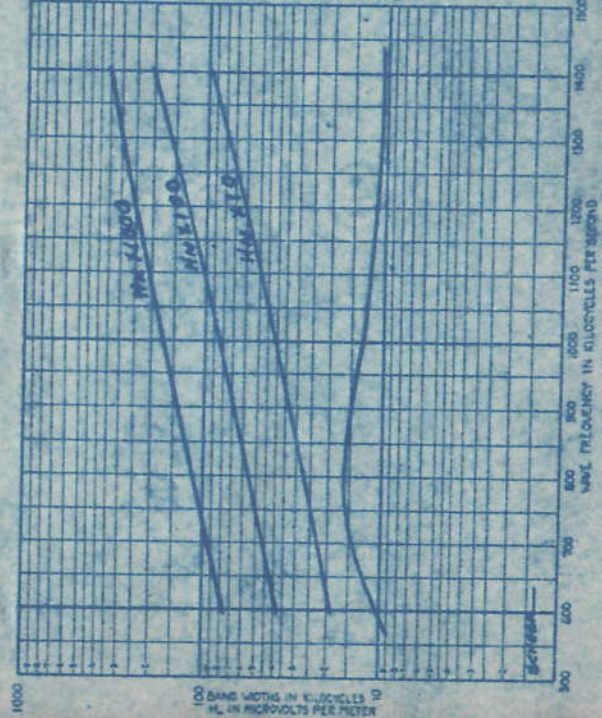
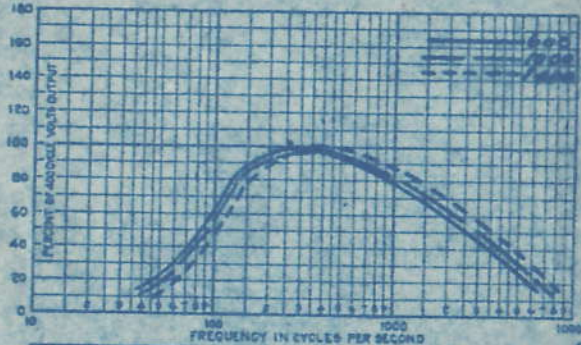
CROSLLEY  
 MODEL - 41-S  
 AUGUST 1929



PRICE \$35 LESS SPEAKER  
 CROSLLEY 30.  
 MODEL 41-S  
 7/29/29  
 SCHEER

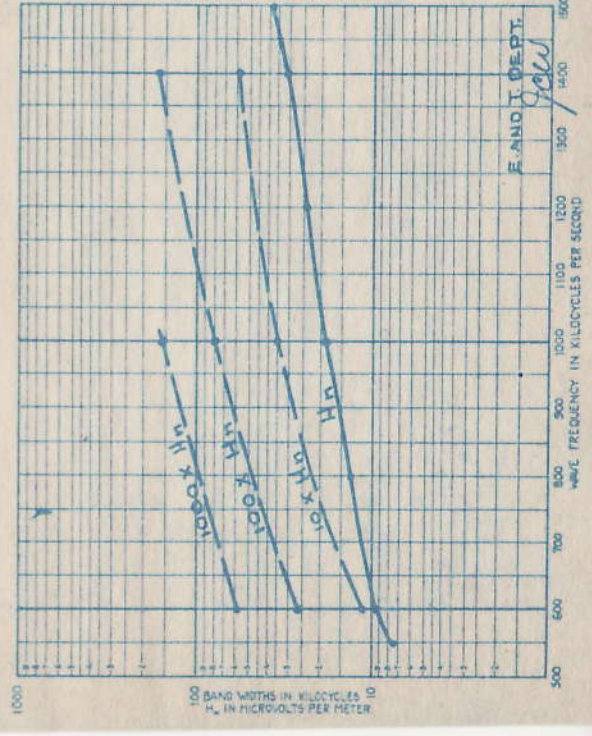
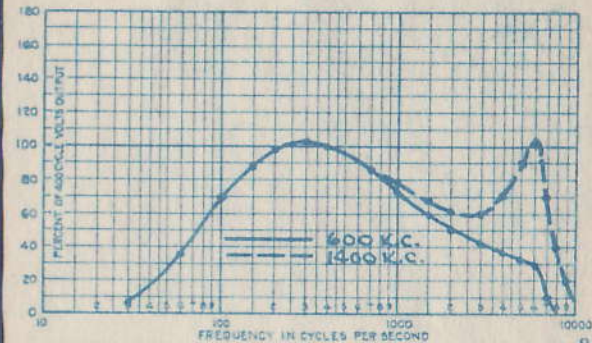
3-224 RF  
 2-227 DET. & 1ST AUDIO, 2-295 P.P.  
 OUTPUT, 1-280 RECTIFIER  
 VOL. CONT. RATIO. ∞.

CROSLLEY 913.



MU-285-A 4-9-29

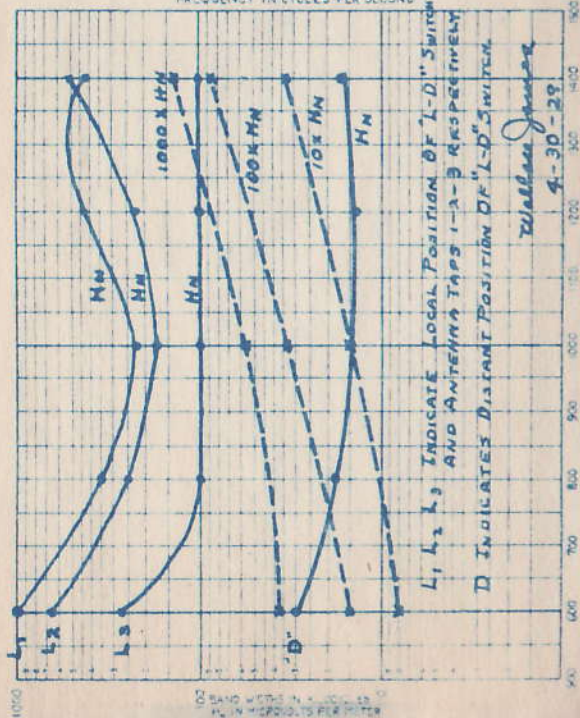
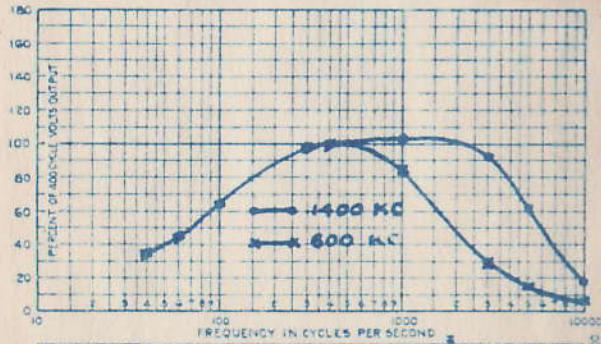
CROSLLEY  
 MODEL - 21  
 AUGUST 1929



EDISON RADIO  
W.E. & M. Co. Report

MARCH 1929

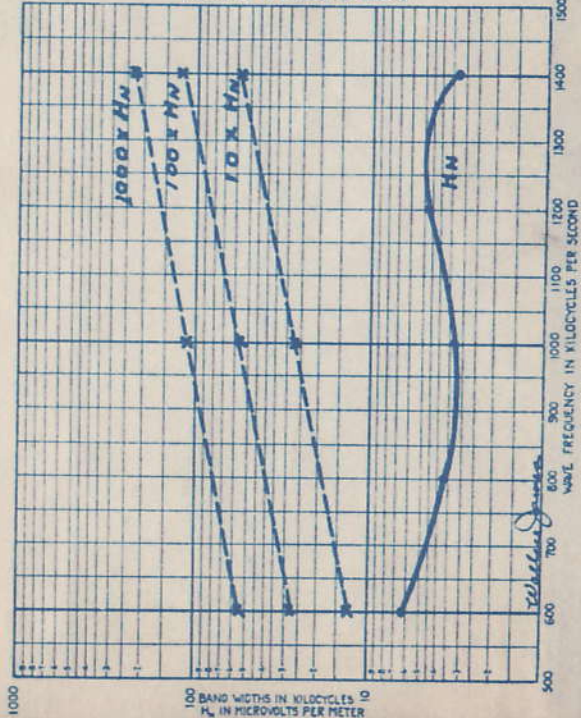
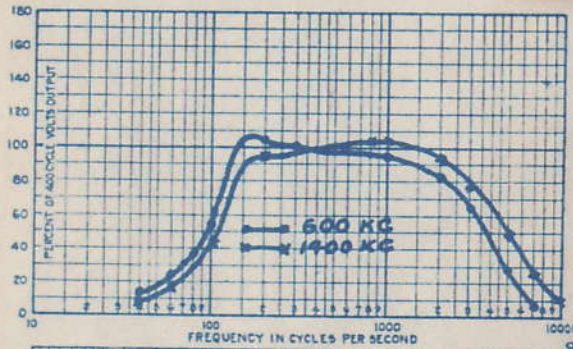
SPLITDORF RADIO CHASSIS  
PEERLESS SPEAKER



PRICE #135.00 (LESS TUBES)

(3) 224 RF (1) 227 D

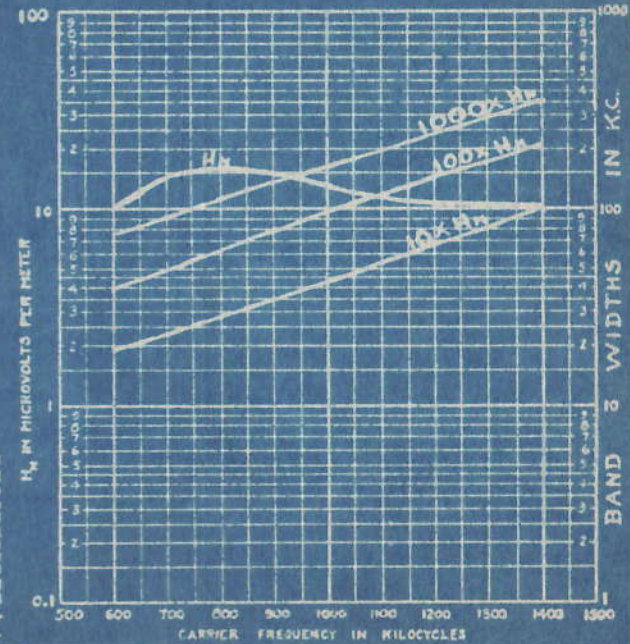
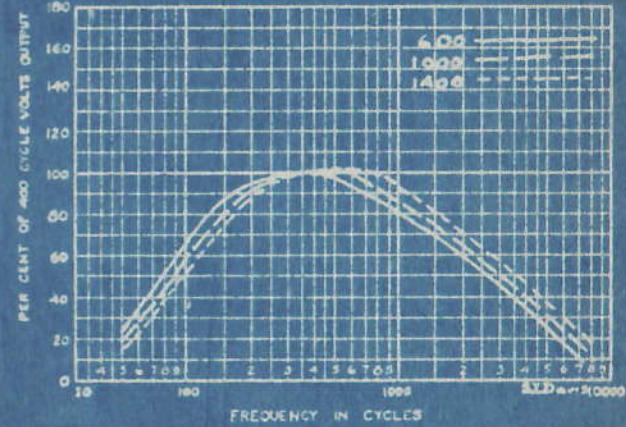
(1) 227 A (2) 245 PP OUTPUT 8" ED CONE  
MUM .40 VOLT VC RATIO (NOT MEASURABLE)



CROSLLEY-42-S  
CONSOLE  
AUGUST 23, 1929

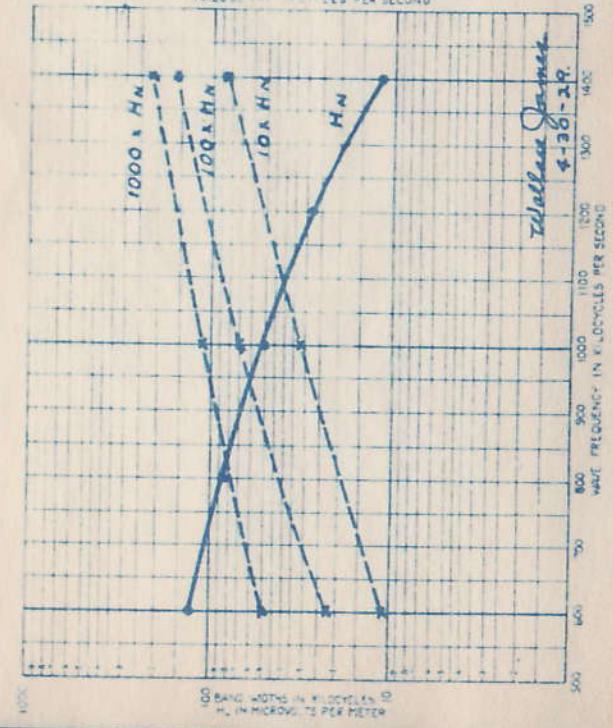
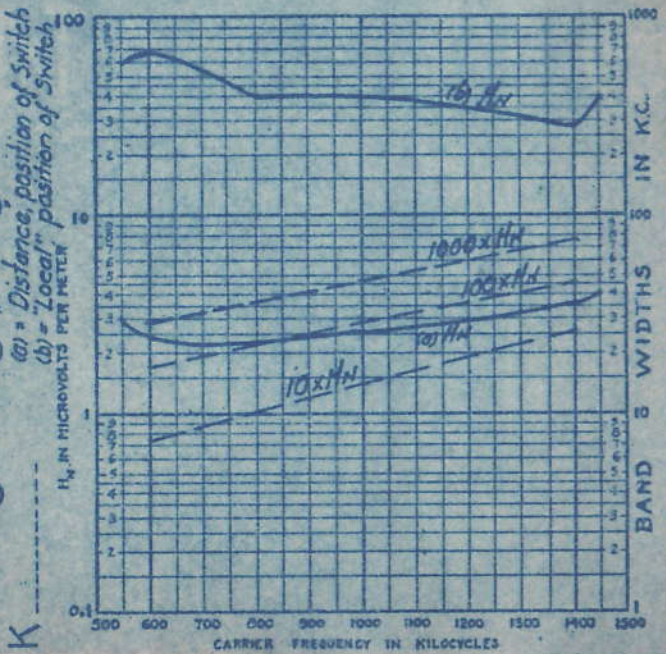
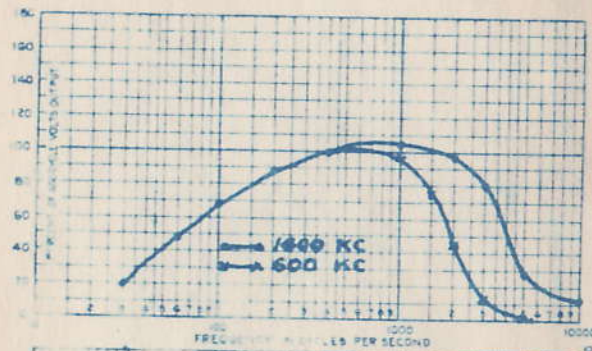
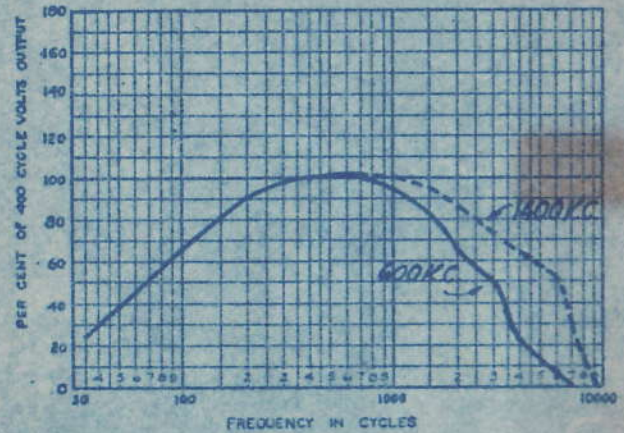
PRICE \$ 85.00 ; Console Model ;  
TUBES 3-224 RF, 227 Bias DET ;  
227, 2-245 PP AUDIO, 280 Rect ;  
VOL CONT Ant Rheo, Sbr-Cg Bias ;  
TUNED CIR 3 ; Metal Legs and cabinet, copy  
of Radio 33 ; Speaker separate

CROSLLEY  
Model 415  
July 29, 1929  
E. Pgh.



PRICE \$ 219.50 MODEL: 21950  
 TUBES 3-224 RF, 227 DET; 2-745-P.P. AUDIO, 280 Rectifier  
 VOL. CONT.;  
 TUNED CIR. 6 TUNED CIRCUITS. EQUALIZED BAND-PASS FILTER.

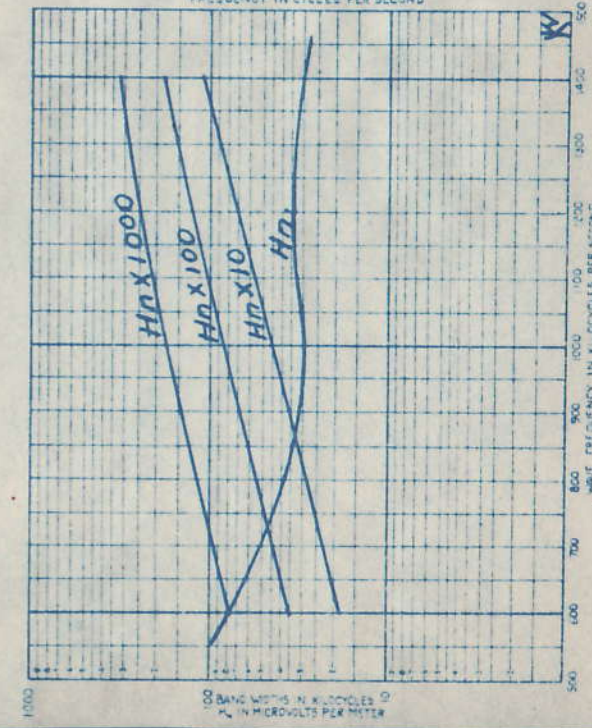
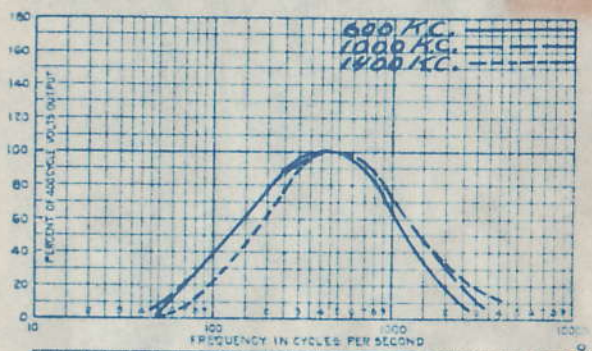
GREBE  
 SUPER-SYNCHROPHASE  
 OCT. 30, 1929  
 Camden, N.J.

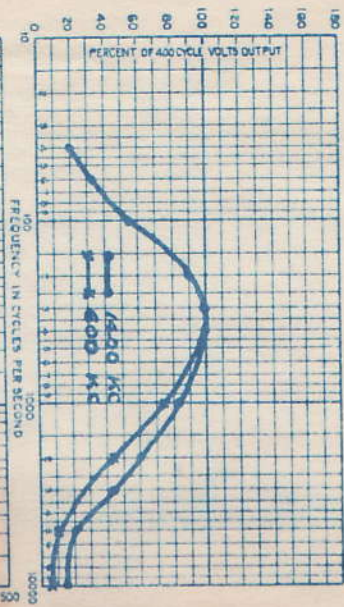
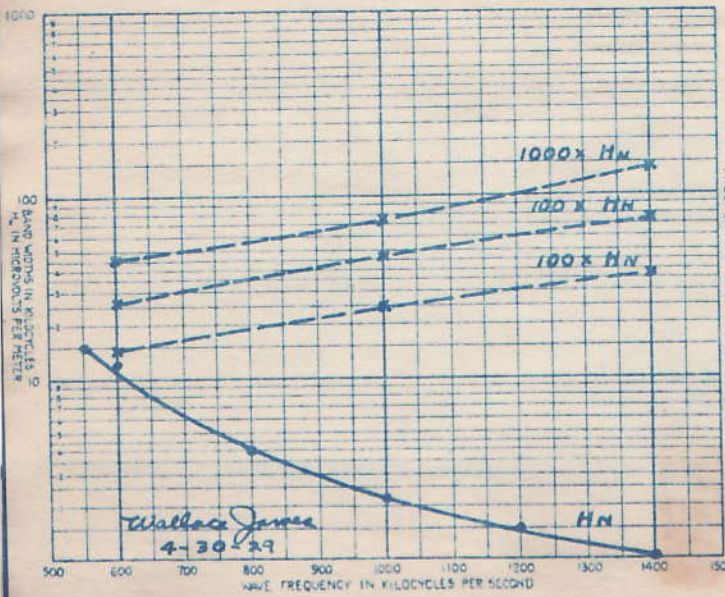


GREBE  
 SYNCHROPHASE  
 SEVEN (WEST. CO.)  
 MARCH 1929

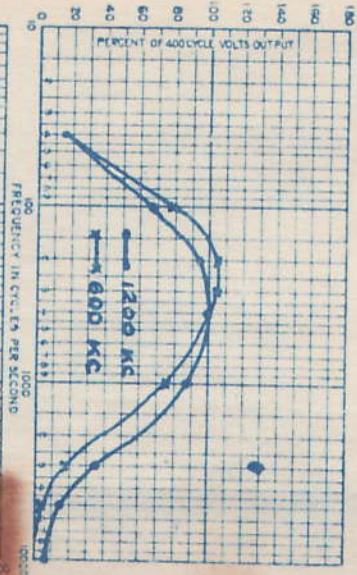
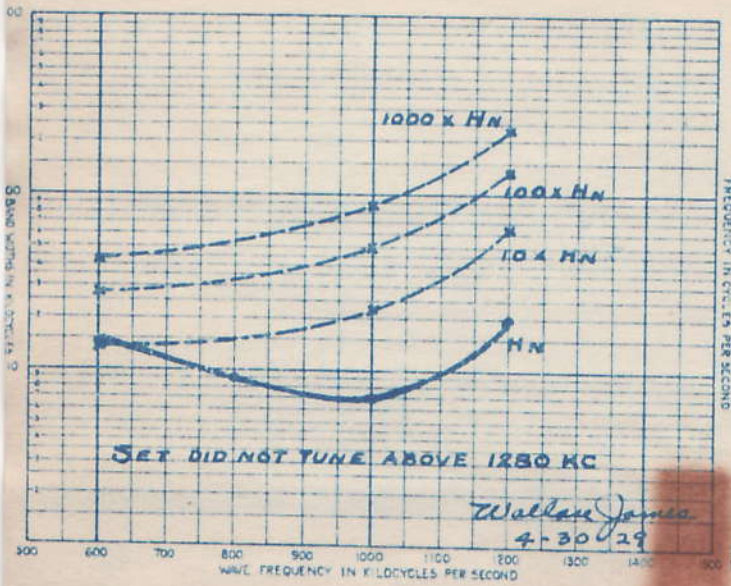
Price \$75.00. Vario-Table Model  
 meter T. Ant. 4 T.C.  
 3-(226) RF. - 2(227)  
 Det. & 1st Audio. 2 (171-A) P.P.  
 output. V.C. Ratio 282:1.

Freed.

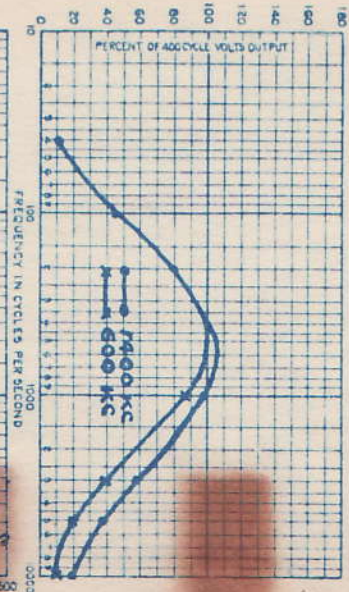
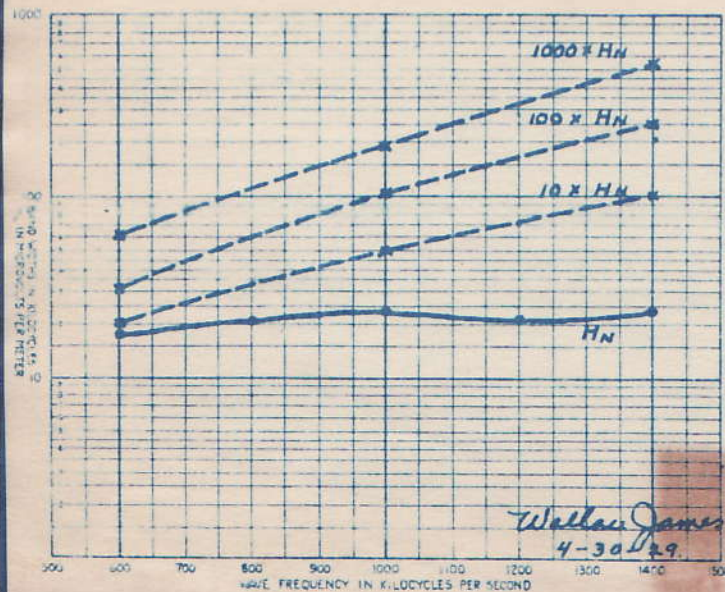




MAJESTIC  
MODEL 72  
MARCH 1929



MAJESTIC  
MODEL 71  
OCTOBER 1928



KOLSTER K-21  
DECEMBER 1928

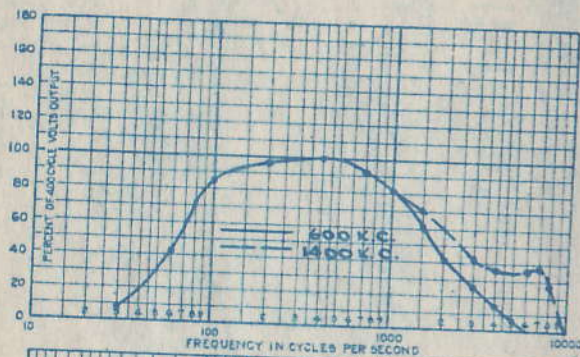
MAJESTIC  
 MODELS 91 & 92  
 AUGUST 1929

Price \$137.50, less tubes  
 Console Model. 4T,  
 Stages - Tuned in -  
 put. 5(227) 2(245) in P.P.  
 1(280). Vol. Control ratio is  
 finite.

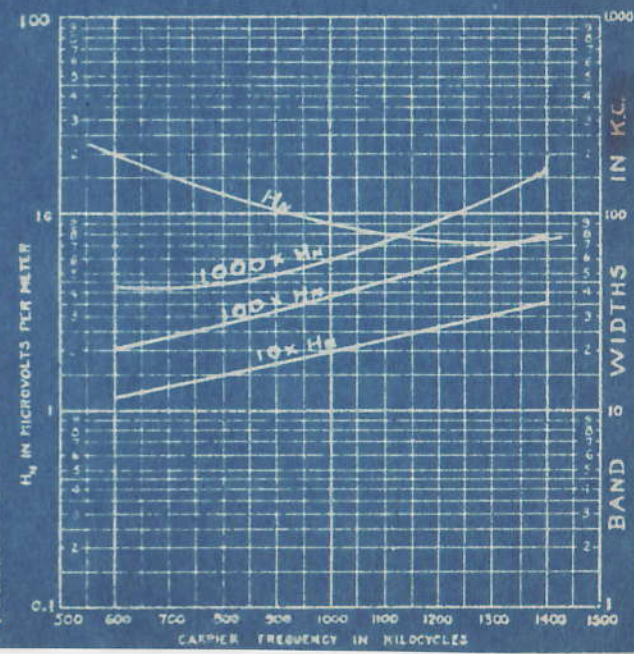
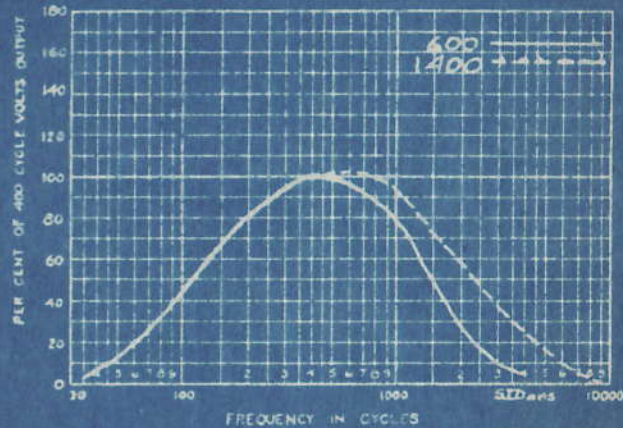
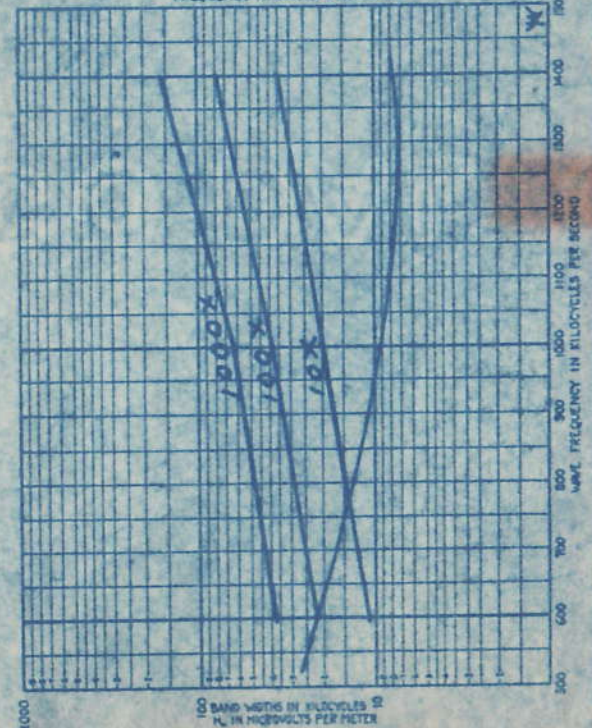
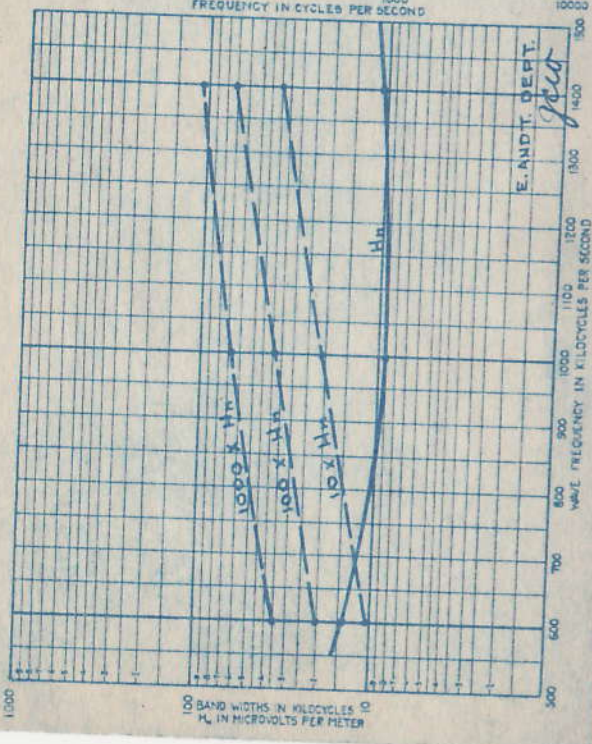
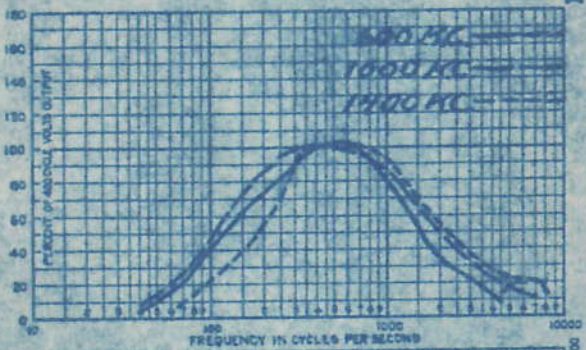
Majestic  
 Model 91  
 Ser. No. 94026215  
 7/3/29

MAJESTIC 91  
 (Avg. of 2 Samples)  
 7-3-29  
 East Pgh.

PRICE \$137.50; Console Model;  
 TUBES 4-227, RF, 227 P.P., DET;  
 2-245 P.P. AUDIO, 280 Rect.;  
 VOL. CONT. C.G. Bias; over 100,000;  
 TUNED CIR. 5; Tuned Ant. Cir.; Sensitivity Line up  
 No Hums 6MF, 2-13H, 1-140H, chokes 140H, Field

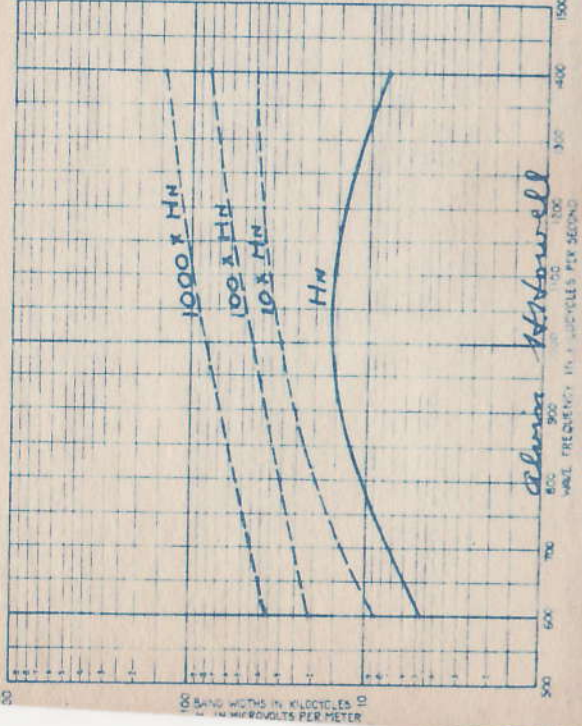
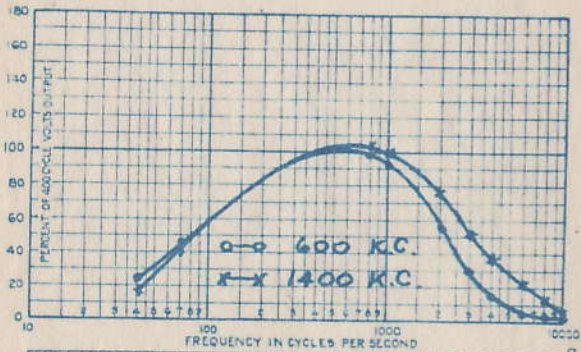


Majestic - 91



PRICE \$115 (LESS TUBES)  
 (3) 224 (2) 227  
 (2) 245 P.P. (1) 199 (1) 280  
 HUM ACROSS 5000 Ω 1.89 VOLTS  
 GRID LEAK DET. ELECTROSTATIC  
 SPEAKER V.C. RATIO 62,400 : 1.

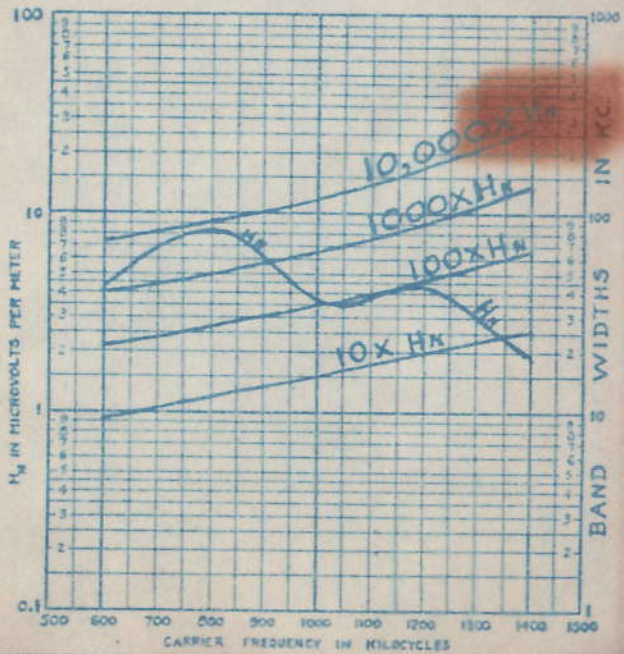
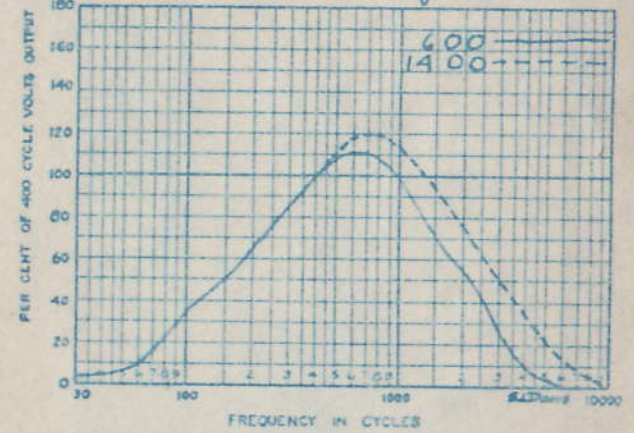
PEERLESS  
 COURIER  
 C. F. 5833  
 OCT. 31, 1929



PRICE \$165.00; Console Model;  
 TUBES 3-224 RF, 227 DET;  
 227-2-245 P. AUDIO, 199, + 280 Rect.  
 VOL. CONT. ca 60,000:1  
 TUNED CIR 4;

PEERLESS  
 COURIER  
 MODEL 65  
 10-30-29  
 E. Pgh.

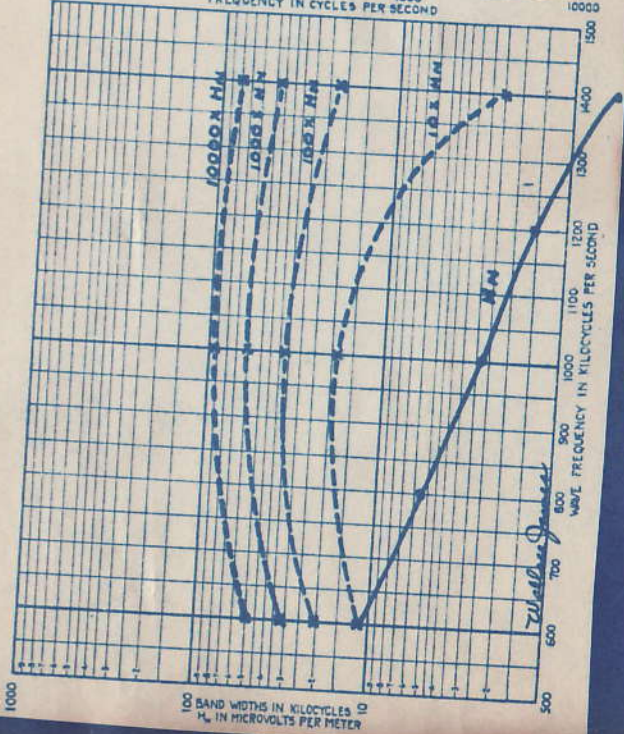
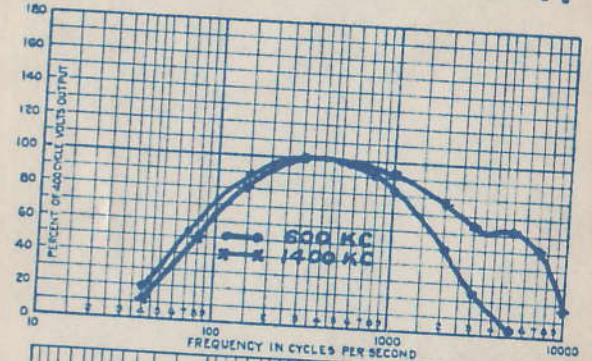
○ Kylectron Speaker, using 199 as Rectifier



K7804962

PRICE \$137.50 (LESS TUBES)  
 (4) 227 RF (1) 227 PD  
 (2) 245 (PP) OUTPUT ED 8" CONE  
 HUM 0.65 VOLT VC RATIO - 800,000:1

MAJESTIC - 91  
 CONSOLE  
 AUGUST 10, 1929



PRICE \$ 150.00 ; Console MODEL :  
TUBES 3-226 RE 227 G.L. DET ;  
226 2-171 PP AUDIO 280 Rest ;  
VOL. CONT Ant. Pot. 53,200 Ω ;  
Tuned Cir 4 ;

PHILCO  
(Neutrodyne)  
5-20-29  
E. Pgh.

PHILCO RADIO  
MODEL 512  
W.E. & M. Co. DATA  
NOVEMBER 1929

3-226R.F.; 1-227 Det., PHILCO  
1-228 A.F., 1-171-AA.F. Model 512  
1-280 Rot.; 4 Tuned Cir. 28; E. Pgh. Tested 8-15  
Volume Control Ratio 1000:1

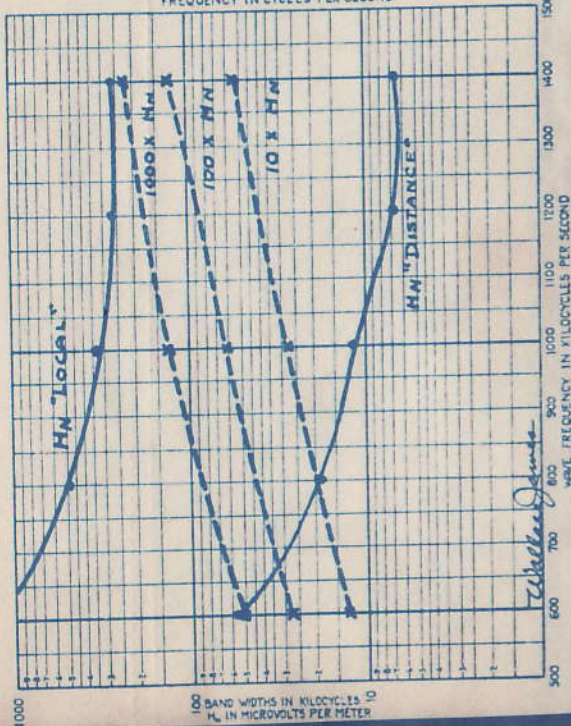
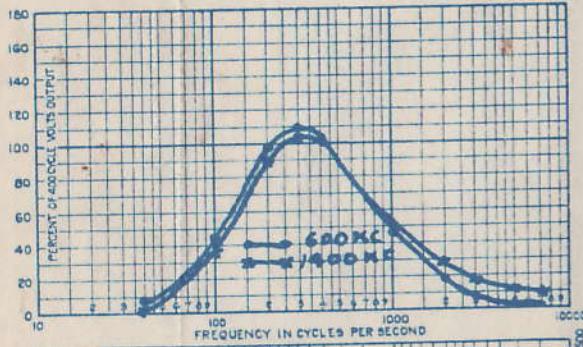
PRICE \$119.50 (LESS TUBES)

PHILCO-65  
CONSOLE  
AUGUST 22, 1929

(2) 224 (RF) (1) 227 (PD)

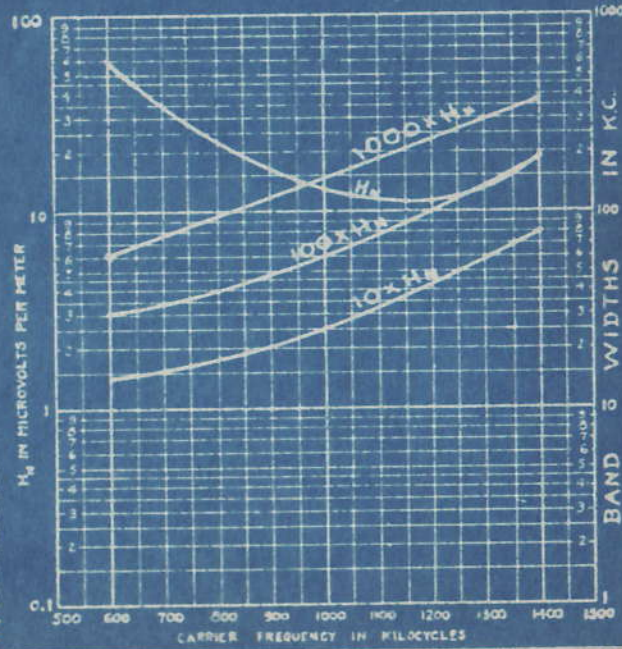
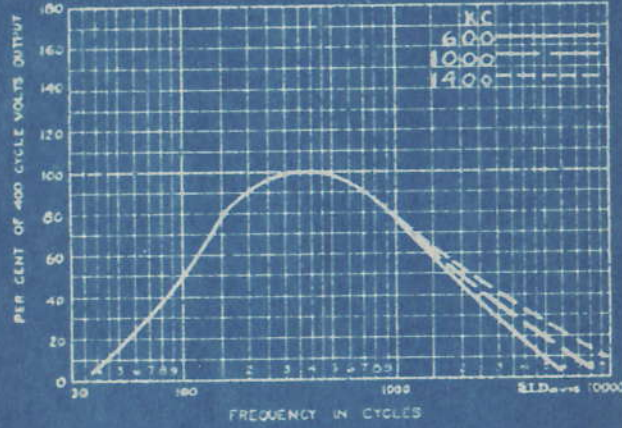
(2) 245 (PP) OUTPUT  $8\frac{1}{2}$ " ED CONE

HUM .08 VOLT VC RATIO 200,000:1

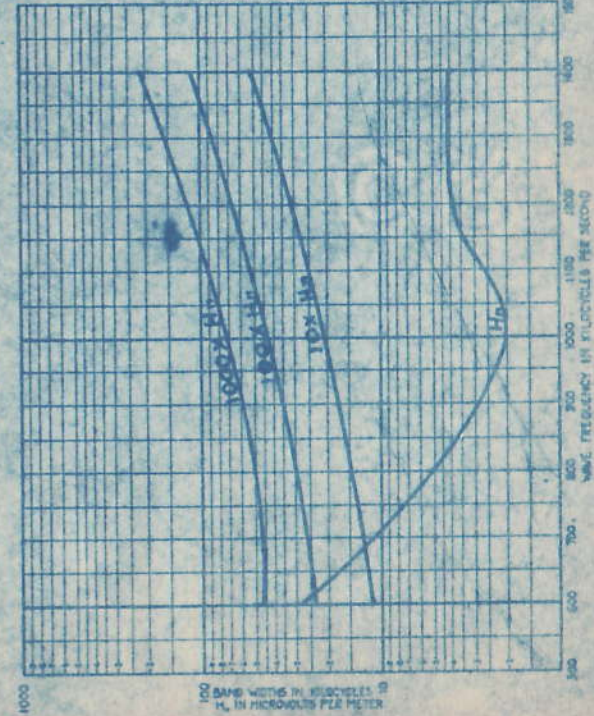
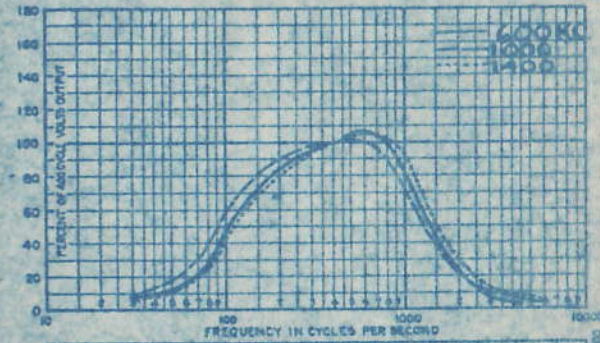


PRICE \$139.50; Console Model:  
TUBES 2-224 RF, 227 PD, DET;  
2-245 PP, AUDIO, 280 Rect;  
VOL. CONT. S.G. Bias 8470:1  
TUNED CIR 3;

PHILCO 65  
Screen Grid  
8-8-29  
E. Pgh.



PHILCO  
CONSOLE  
Price \$150.; 4 Tuned  
Cir.; 4-226, (3 R.F., 1  
A.F.) 1-227 Det., 2-171  
P.P.A.F. 1-280 Rect.; Dynamic Speaker  
Antenna Pot, V.C., Ratio=53,200:1  
Tuned First R.F. (Variometer Type)



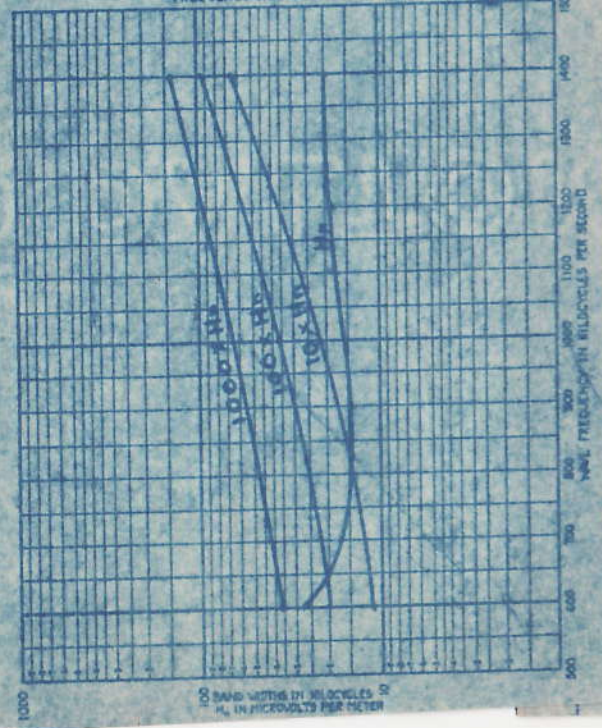
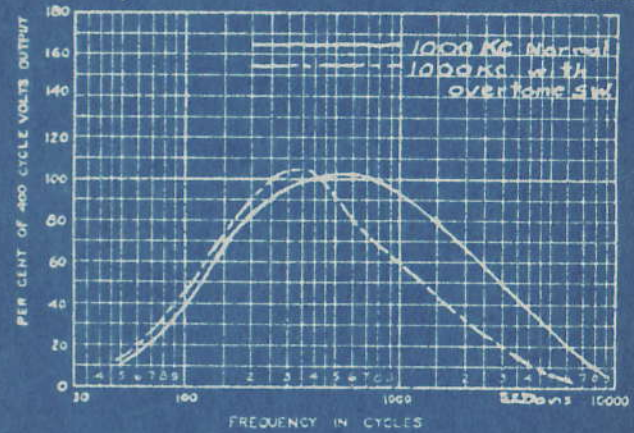
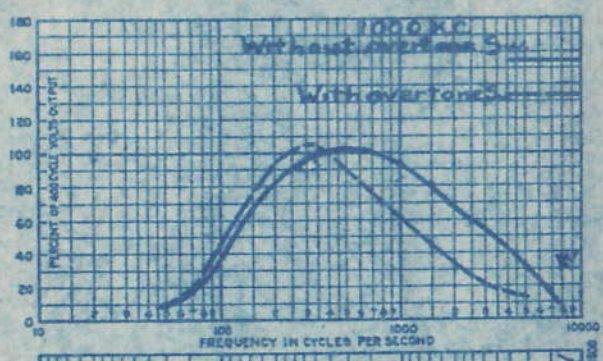
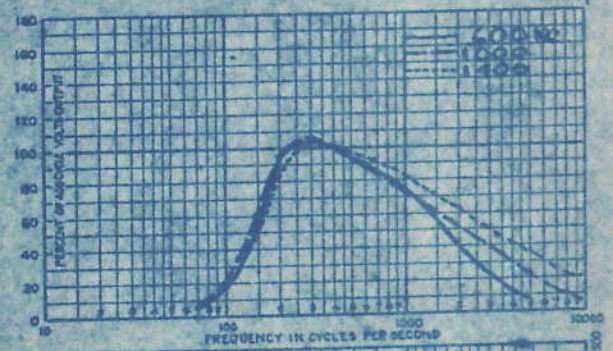
PHILCO

Price \$147.50; 5-237 R.F. SPARTON  
 1-227 Det.; 1-250A.F.; 1-  
 280 Rect.; Table Model; EQUASONNE  
 4-9-29 E. Pgh  
 Cir. Band Pass Filter;  
 untuned R.F. Amplifier; V.C. Ratio=  
 100,000:1; Power Detector;

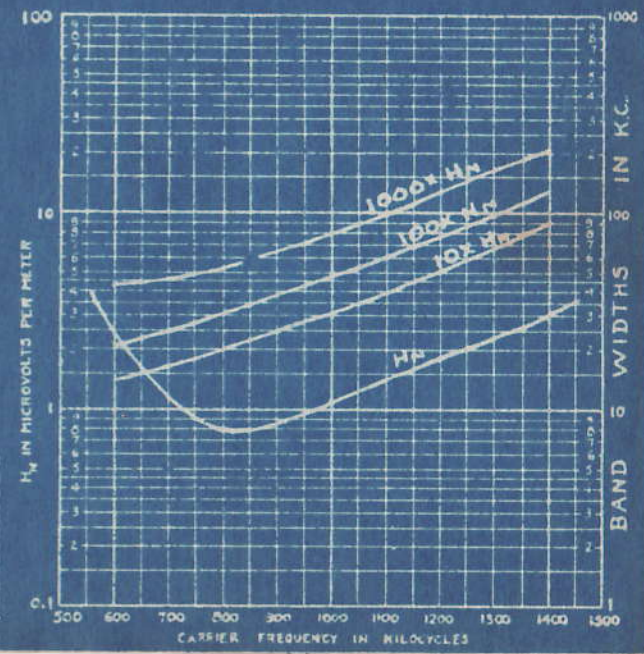
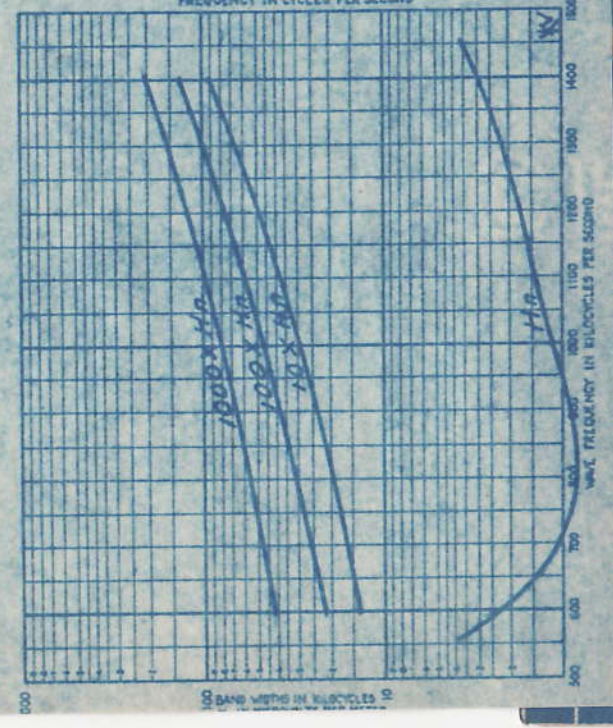
Price \$160; 4-224, 1227 SILVER  
 2-245, & 1-280; 4 Tuned LOWBOY  
 Tested 7-12-29  
 Circuits; V C Ratio=Inf 29; E Pgh  
 3-224 R F, 1-224 Det, 1-227 A F,  
 2-245 P P; Dynamic Reproducer;

PRICE \$ 160<sup>00</sup>; Console Model; SILVER  
 TUBES 3-224, RF, 224B, DET; LOWBOY  
 227, 2-245 PP AUDIO, 280 Rect.; 7/12/29  
 Vol. Cont S.G. Bias; over 10000:1; East Pgh.  
 TUNED CIR 4; Dynamic Reproducer; "Overtones  
 Switch"; Hum 0.08 V across ACOO

SPARTON EQUASONNE MODEL 69



SILVER MARSHALL LOWBOY

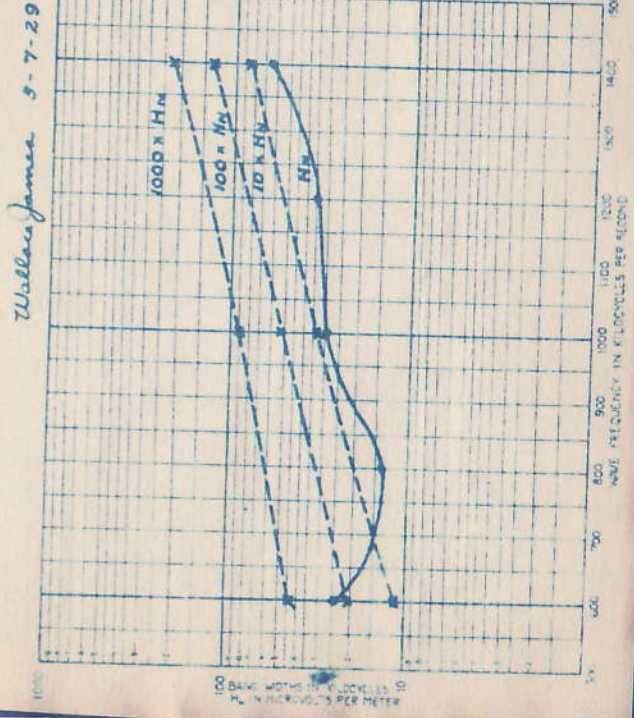
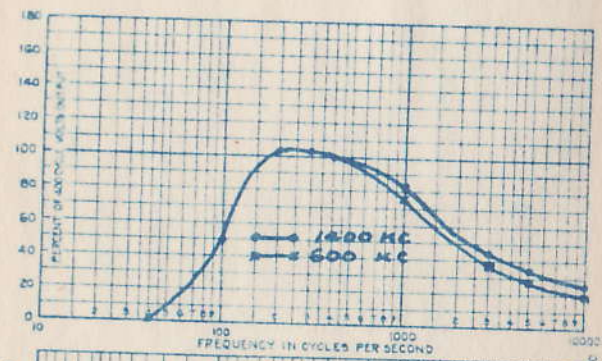
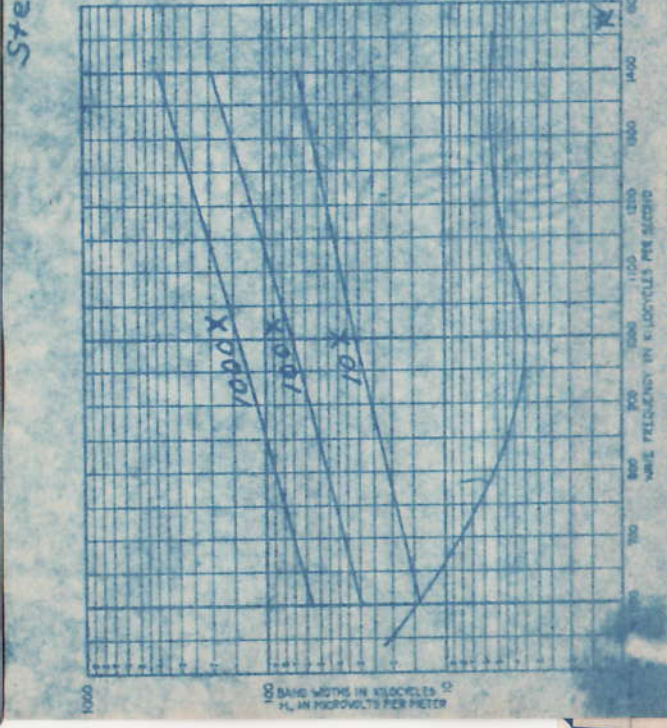
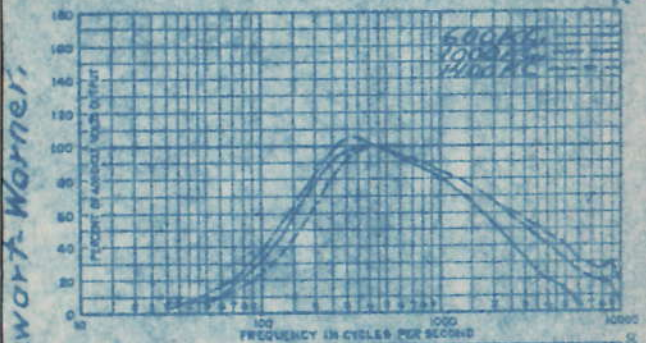
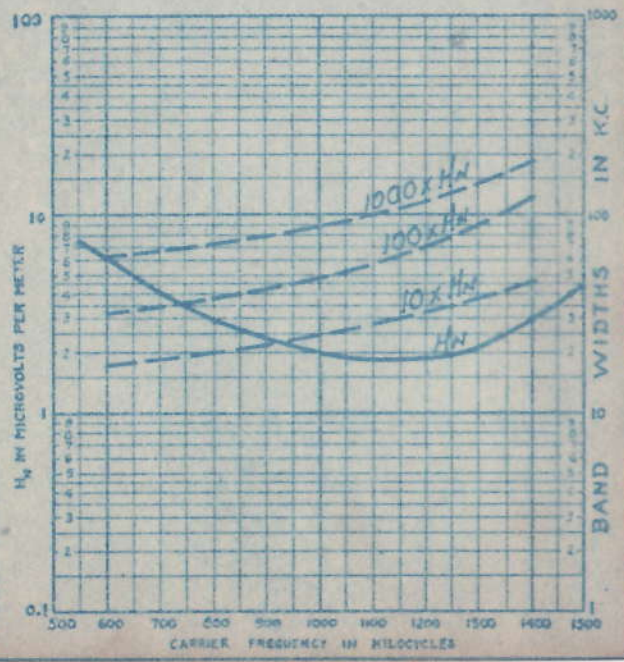
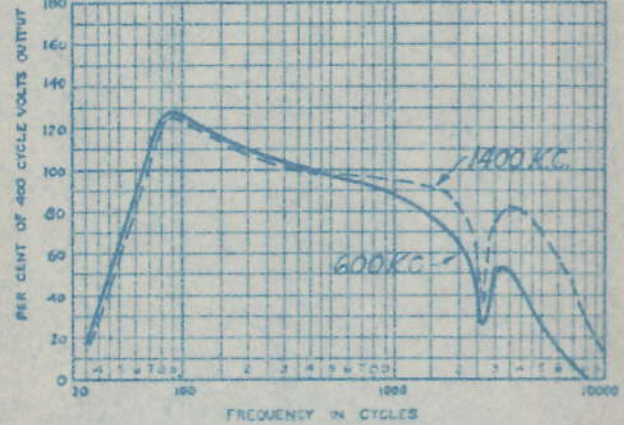


PRICE \$247<sup>50</sup> : Console Model ;  
 TUBES 3-224 RF, 227 DET ;  
 245 AUDIO, 280 Rect. ;  
 VOL. CONT. Aut. Pot. & Screen Grid. 10000:1  
 TUNED CIR. 4  
 RCA 106 Type Speaker

STROMBERG-CARLSON  
 \* 6A2-A  
 OCT. 9, 1929  
 Camden N.J.

Price \$89.75 less tubes Stewart  
 (227), 2 (245 P.P. output) Warner  
 (280). 4 T. circuits. Table Model  
 6/18/29  
 pl. C. Ratio-Inf. Built in Term-  
 inals for M.S.-D.S. - Pick-up  
 and Television.

SPARTON  
 EQUASSONNE  
 MODEL 69  
 DECEMBER 1928



Wallace James 9-7-29

Stewart-Warner

PRICE \$450<sup>00</sup>; Console Model;  
 TUBES 4-227 RF, 1-227B<sub>1</sub> DET;  
 1-227, 2-245 AUDIO, 2-80 Rect.;  
 VOL. CONT. 6.31:1;  
 TUNED CIR. 5; Automatic Tuning; Peerless  
 Dynamic Reproducer.

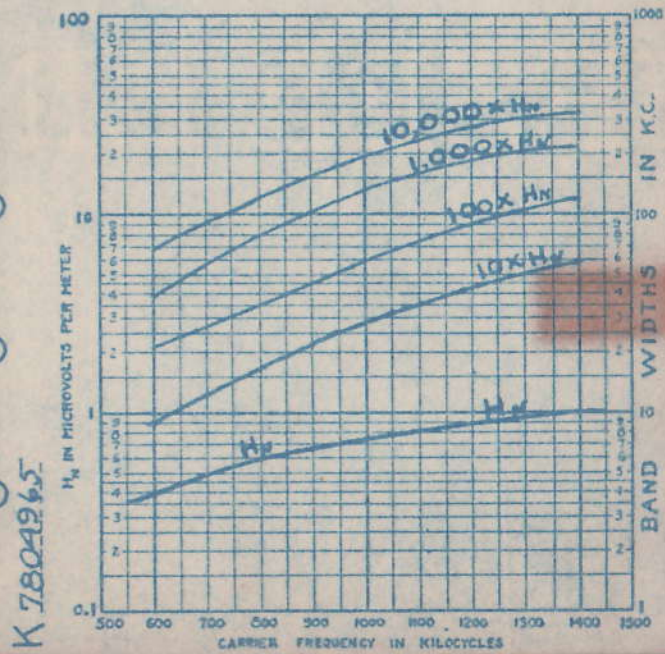
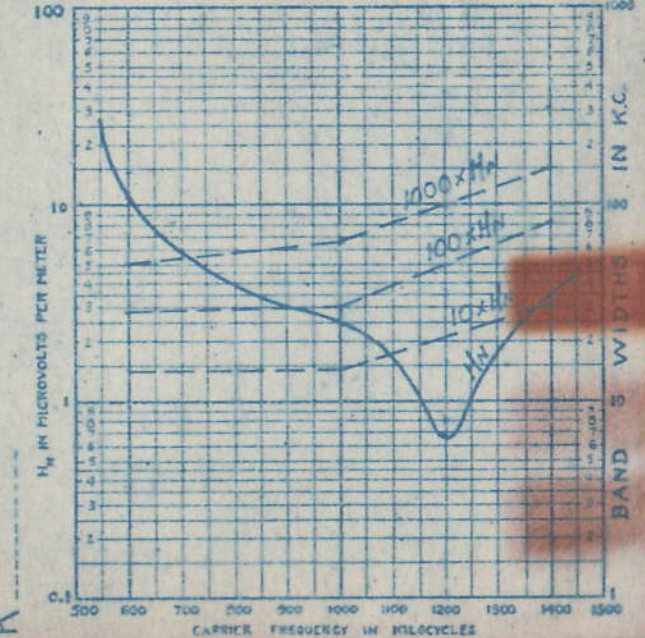
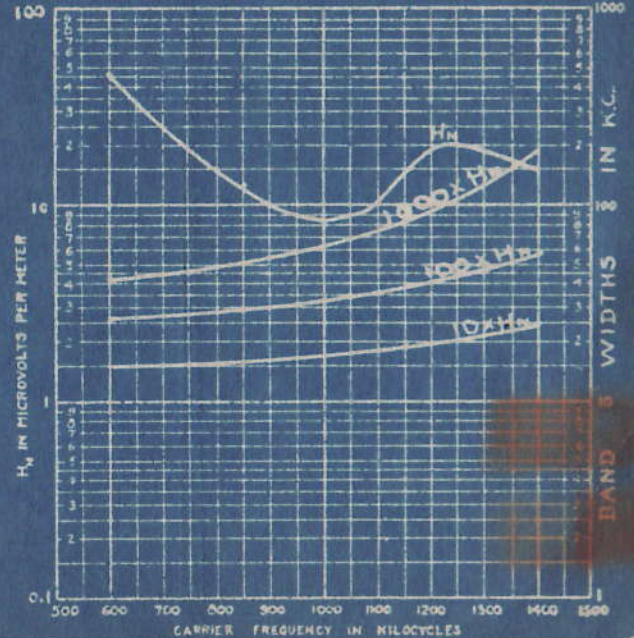
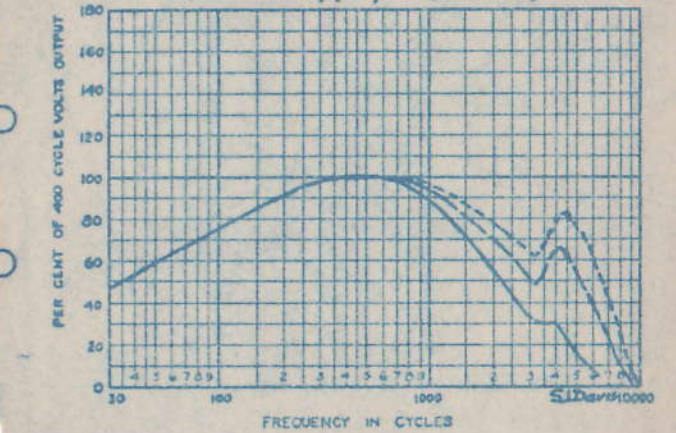
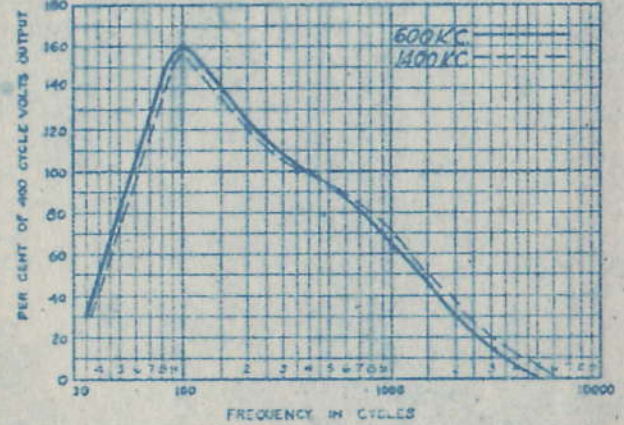
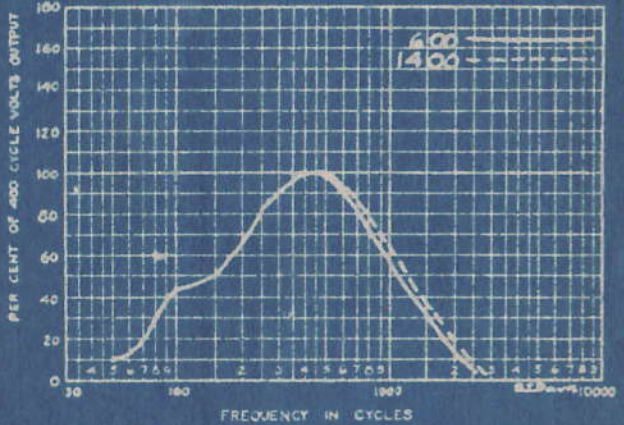
ZENITH  
 39A  
 8/30/29  
 East Pgh.

PRICE \$269<sup>00</sup>; Comb. Model;  
 TUBES 2-224; 2-227 RF, 227 DET;  
 1-227; 2-245 AUDIO, 280 RECT.;  
 VOL. CONT. BETTER THAN 100:1;  
 TUNED CIR. 4 TUNED GRID CIRCUITS

TEMPLE  
 8-91  
 Oct. 1, 1929  
 Camden N.J.

PRICE \$347<sup>50</sup>; Console Model;  
 TUBES 3-224 RF, 227B<sub>1</sub> DET;  
 227, 2-245 AUDIO, 2-280 Rect.;  
 VOL. CONT. over 500,000:1 <sup>both controlled</sup>  
 TUNED CIR. 4 Tuned Grid Cir.; 227 V.C. tube on Ec  
 of 1st 2 RF; Field supply separate; AFA RF v.c.

STROMBERG  
 CARLSON  
 11-8-29  
 E. Pgh.



K 7804265